

C/EBP α (phospho Ser21) Polyclonal Antibody

Catalog_no :	AP0597
Applications :	WB,IHC-p,ELISA
Reactivity :	Human,Mouse,Rat
Category :	抗原抗体
Size :	100 μ g/50 μ g/20 μ g
Gene_name :	CEBPA
Protein_name :	CCAAT/enhancer-binding protein alpha
Humangene_id :	1050
Humanswissprot_no :	P49715
Mousegene_id :	12606
Mouseswissprot_no :	P53566
Ratgene_id :	24252
Ratswissprot_no :	P05554
Immunogen :	The antiserum was produced against synthesized peptide derived from human C/EBP-alpha around the phosphorylation site of Ser21. AA range:6-55
Specificity :	Phospho-C/EBP α (S21) Polyclonal Antibody detects endogenous levels of C/EBP α protein only when phosphorylated at S21.
Formulation :	Liquid in PBS containing 50% glycerol, 0.5% BSA and 0.02% sodium azide.
Source :	Rabbit
Dilution :	Western Blot: 1/500 - 1/2000. Immunohistochemistry: 1/100 - 1/300. ELISA: 1/5000. Not yet tested in other applications.
Purification :	The antibody was affinity-purified from rabbit antiserum by affinity-chromatography using epitope-specific immunogen.
Concentration :	1 mg/ml
Storage_stability :	-20°C/1 year

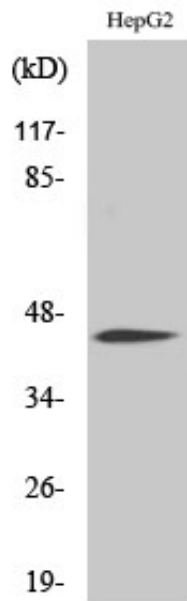


Msd : MSDS_Antibody.pdf

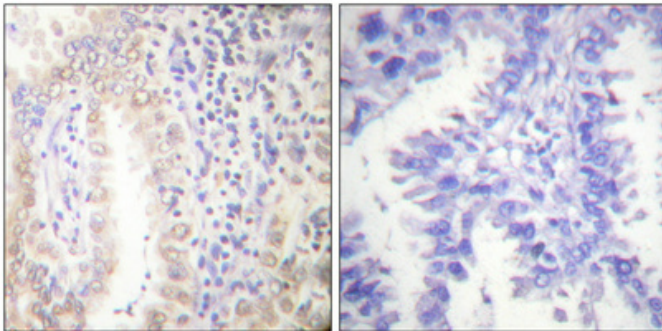
Other_name : CEBPA; CCAAT/enhancer-binding protein alpha; C/EBP alpha

Molecular Weight : 45KD

Product Images



Western Blot analysis of various cells using Phospho-C/EBP α (S21) Polyclonal Antibody cells nucleus extracted by Minute TM Cytoplasmic and Nuclear Fractionation kit (SC-003, Inventbiotech, MN, USA).



Immunohistochemical analysis of paraffin-embedded Human lung cancer. Antibody was diluted at 1:100 (4 $^{\circ}$, overnight). High-pressure and temperature Tris-EDTA, pH 8.0 was used for antigen retrieval. Negative control (right) obtained from antibody was pre-absorbed by immunogen peptide.