

eEF2K (phospho Ser366) Polyclonal Antibody

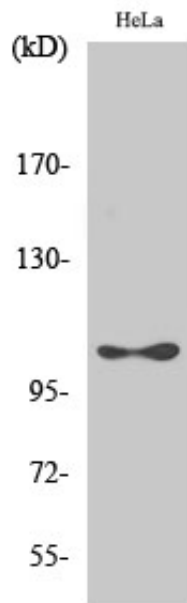
Catalog_no :	AP0599
Applications :	WB,IHC-p,ELISA
Reactivity :	Human,Rat
Category :	抗原抗体
Size :	100µg/50µg/20µg
Gene_name :	EEF2K
Protein_name :	Eukaryotic elongation factor 2 kinase
Humangene_id :	29904
Humanswissprot_no :	O00418
Ratgene_id :	25435
Ratswissprot_no :	P70531
Immunogen :	The antiserum was produced against synthesized peptide derived from human eEF2K around the phosphorylation site of Ser366. AA range:331-380
Specificity :	Phospho-eEF2K (S366) Polyclonal Antibody detects endogenous levels of eEF2K protein only when phosphorylated at S366.
Formulation :	Liquid in PBS containing 50% glycerol, 0.5% BSA and 0.02% sodium azide.
Source :	Rabbit
Dilution :	Western Blot: 1/500 - 1/2000. Immunohistochemistry: 1/100 - 1/300. ELISA: 1/40000. Not yet tested in other applications.
Purification :	The antibody was affinity-purified from rabbit antiserum by affinity-chromatography using epitope-specific immunogen.
Concentration :	1 mg/ml
Storage_stability :	-20°C/1 year
Msds :	MSDS_Antibody.pdf
Other_name :	EEF2K; Eukaryotic elongation factor 2 kinase; eEF-2 kinase; eEF-2K; Calcium/calmodulin-dependent eukaryotic elongation factor 2 kinase



Molecular
Weight :

105KD

Product Images



Western Blot analysis of various cells using Phospho-eEF2K (S366) Polyclonal Antibody diluted at 1 : 1000