

## Filamin 1 (phospho Ser2152) Polyclonal Antibody

Catalog_no :	AP0600
Applications :	WB,IHC-p,ELISA
Reactivity :	Human,Mouse,Rat,Monkey
Category :	抗原抗体
Size :	100µg/50µg/20µg
Gene_name :	FLNA
Protein_name :	Filamin-A
Humangene_id :	<a href="#">2316</a>
Humanswissprot_no :	<a href="#">P21333</a>
Mousegene_id :	<a href="#">192176</a>
Mouseswissprot_no :	<a href="#">Q8BTM8</a>
Immunogen :	The antiserum was produced against synthesized peptide derived from human Filamin A around the phosphorylation site of Ser2152. AA range:2121-2170
Specificity :	Phospho-Filamin 1 (S2152) Polyclonal Antibody detects endogenous levels of Filamin 1 protein only when phosphorylated at S2152.
Formulation :	Liquid in PBS containing 50% glycerol, 0.5% BSA and 0.02% sodium azide.
Source :	Rabbit
Dilution :	Western Blot: 1/500 - 1/2000. Immunohistochemistry: 1/100 - 1/300. ELISA: 1/10000. Not yet tested in other applications.
Purification :	The antibody was affinity-purified from rabbit antiserum by affinity-chromatography using epitope-specific immunogen.
Concentration :	1 mg/ml
Storage_stability :	-20°C/1 year
Msds :	<a href="#">MSDS_Antibody.pdf</a>
Other_name :	FLNA; FLN; FLN1; Filamin-A; FLN-A; Actin-binding protein 280; ABP-280; Alpha-filamin; Endothelial actin-binding protein; Filamin-1; Non-muscle filamin

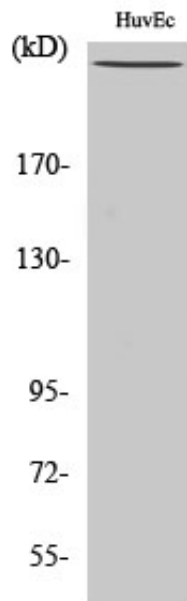


Molecular  
Weight :

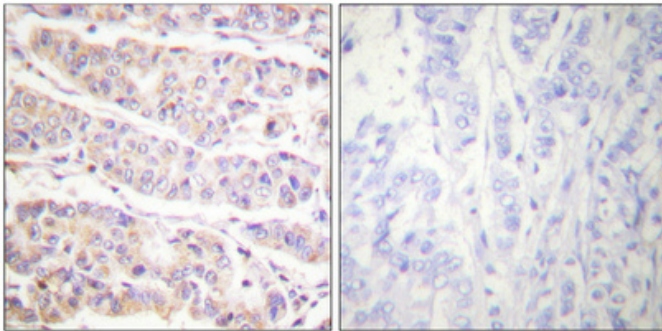
280KD

---

## Product Images



Western Blot analysis of various cells using Phospho-Filamin 1 (S2152) Polyclonal Antibody diluted at 1 : 2000



Immunohistochemical analysis of paraffin-embedded Human breast cancer. Antibody was diluted at 1:100(4°,overnight). High-pressure and temperature Tris-EDTA,pH8.0 was used for antigen retrieval. Negative contrl (right) obtaned from antibody was pre-absorbed by immunogen peptide.