

HSL (phospho Ser855) Polyclonal Antibody

Catalog_no :	AP0602
Applications :	WB,IHC-p,ELISA
Reactivity :	Human,Mouse,Rat
Category :	抗原抗体
Size :	100µg/50µg/20µg
Gene_name :	LIPE
Protein_name :	Hormone-sensitive lipase
Humangene_id :	3991
Humanswissprot_no :	Q05469
Mousegene_id :	16890
Mouseswissprot_no :	P54310
Ratgene_id :	25330
Ratswissprot_no :	P15304
Immunogen :	The antiserum was produced against synthesized peptide derived from human HSL around the phosphorylation site of Ser855/554. AA range:520-569
Specificity :	Phospho-HSL (S855) Polyclonal Antibody detects endogenous levels of HSL protein only when phosphorylated at S855.
Formulation :	Liquid in PBS containing 50% glycerol, 0.5% BSA and 0.02% sodium azide.
Source :	Rabbit
Dilution :	Western Blot: 1/500 - 1/2000. Immunohistochemistry: 1/100 - 1/300. ELISA: 1/20000. Not yet tested in other applications.
Purification :	The antibody was affinity-purified from rabbit antiserum by affinity-chromatography using epitope-specific immunogen.
Concentration :	1 mg/ml
Storage_stability :	-20°C/1 year

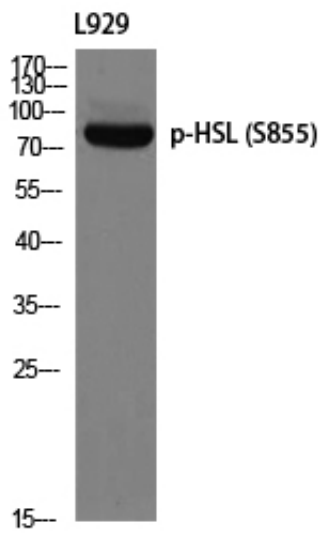


Msd : MSDS_Antibody.pdf

Other_name : LIPE; Hormone-sensitive lipase; HSL

Molecular Weight : 81KD

Product Images



Western blot analysis of L929 using p-HSL (S855) antibody. Antibody was diluted at 1:1000