

## Ksr-1 (phospho Ser392) Polyclonal Antibody

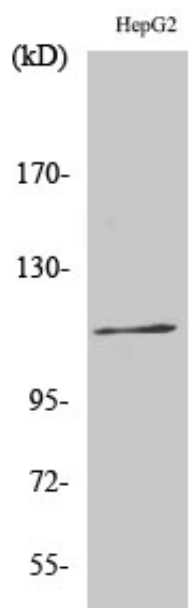
Catalog_no :	AP0603
Applications :	WB,IHC-p,ELISA
Reactivity :	Human,Mouse
Category :	抗原抗体
Size :	100µg/50µg/20µg
Gene_name :	KSR1
Protein_name :	Kinase suppressor of Ras 1
Humangene_id :	<a href="#">8844</a>
Humanswissprot_no :	<a href="#">Q8IVT5</a>
Mousegene_id :	<a href="#">16706</a>
Mouseswissprot_no :	<a href="#">Q61097</a>
Immunogen :	The antiserum was produced against synthesized peptide derived from human KSR around the phosphorylation site of Ser392. AA range:358-407
Specificity :	Phospho-Ksr-1 (S392) Polyclonal Antibody detects endogenous levels of Ksr-1 protein only when phosphorylated at S392.
Formulation :	Liquid in PBS containing 50% glycerol, 0.5% BSA and 0.02% sodium azide.
Source :	Rabbit
Dilution :	Western Blot: 1/500 - 1/2000. Immunohistochemistry: 1/100 - 1/300. ELISA: 1/20000. Not yet tested in other applications.
Purification :	The antibody was affinity-purified from rabbit antiserum by affinity-chromatography using epitope-specific immunogen.
Concentration :	1 mg/ml
Storage_stability :	-20°C/1 year
Msds :	<a href="#">MSDS_Antibody.pdf</a>
Other_name :	KSR1; KSR; Kinase suppressor of Ras 1
Molecular	115KD



Weight :

---

## Product Images



Western Blot analysis of various cells using Phospho-Ksr-1 (S392) Polyclonal Antibody