

PLC γ 1 (phospho Tyr771) Polyclonal Antibody

Catalog_no :	AP0607
Applications :	WB,IHC-p,ELISA
Reactivity :	Human,Mouse,Rat,Monkey
Category :	抗原抗体
Size :	100 μ g/50 μ g/20 μ g
Gene_name :	PLCG1
Protein_name :	1-phosphatidylinositol 4,5-bisphosphate phosphodiesterase gamma-1
Humangene_id :	5335
Humanswissprot_no :	P19174
Mousegene_id :	18803
Mouseswissprot_no :	Q62077
Ratgene_id :	25738
Ratswissprot_no :	P10686
Immunogen :	The antiserum was produced against synthesized peptide derived from human PLCG1 around the phosphorylation site of Tyr771. AA range:736-785
Specificity :	Phospho-PLC γ 1 (Y771) Polyclonal Antibody detects endogenous levels of PLC γ 1 protein only when phosphorylated at Y771.
Formulation :	Liquid in PBS containing 50% glycerol, 0.5% BSA and 0.02% sodium azide.
Source :	Rabbit
Dilution :	Western Blot: 1/500 - 1/2000. Immunohistochemistry: 1/100 - 1/300. ELISA: 1/40000. Not yet tested in other applications.
Purification :	The antibody was affinity-purified from rabbit antiserum by affinity-chromatography using epitope-specific immunogen.
Concentration :	1 mg/ml
Storage_stability :	-20°C/1 year

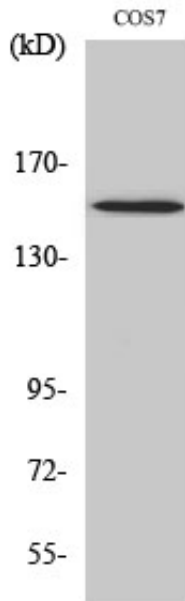


MsdS : [MSDS_Antibody.pdf](#)

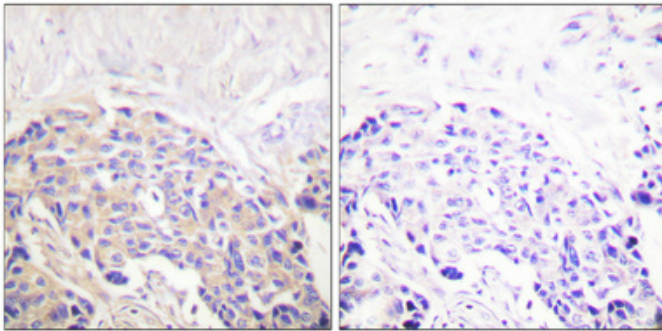
Other_name : PLCG1; PLC1; 1-phosphatidylinositol 4; 5-bisphosphate phosphodiesterase gamma-1; PLC-148; Phosphoinositide phospholipase C-gamma-1; Phospholipase C-II; PLC-II; Phospholipase C-gamma-1; PLC-gamma-1

Molecular Weight : 150KD

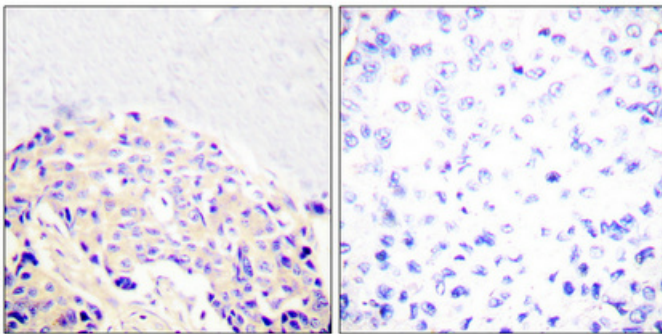
Product Images



Western Blot analysis of various cells using Phospho-PLC γ 1 (Y771) Polyclonal Antibody



Immunohistochemical analysis of paraffin-embedded Human breast cancer. Antibody was diluted at 1:100(4 $^{\circ}$,overnight). High-pressure and temperature Tris-EDTA,pH8.0 was used for antigen retrieval. Negative contrl (right) obtaned from antibody was pre-absorbed by immunogen peptide.



Immunohistochemical analysis of paraffin-embedded Human breast cancer. Antibody was diluted at 1:100(4 $^{\circ}$,overnight). High-pressure and temperature Tris-EDTA,pH8.0 was used for antigen retrieval. Negative contrl (right) obtaned from antibody was pre-absorbed by immunogen peptide.