

PLC  $\gamma$ 2 (phospho Tyr753) Polyclonal Antibody

Catalog_no :	AP0608
Applications :	WB,IHC-p,ELISA
Reactivity :	Human,Mouse,Rat
Category :	抗原抗体
Size :	100 $\mu$ g/50 $\mu$ g/20 $\mu$ g
Gene_name :	PLCG2
Protein_name :	1-phosphatidylinositol 4,5-bisphosphate phosphodiesterase gamma-2
Humangene_id :	<a href="#">5336</a>
Humanswissprot_no :	<a href="#">P16885</a>
Mousegene_id :	<a href="#">234779</a>
Mouseswissprot_no :	<a href="#">Q8CIH5</a>
Ratgene_id :	<a href="#">29337</a>
Ratswissprot_no :	<a href="#">P24135</a>
Immunogen :	The antiserum was produced against synthesized peptide derived from human PLCG2 around the phosphorylation site of Tyr753. AA range:721-770
Specificity :	Phospho-PLC $\gamma$ 2 (Y753) Polyclonal Antibody detects endogenous levels of PLC $\gamma$ 2 protein only when phosphorylated at Y753.
Formulation :	Liquid in PBS containing 50% glycerol, 0.5% BSA and 0.02% sodium azide.
Source :	Rabbit
Dilution :	Western Blot: 1/500 - 1/2000. Immunohistochemistry: 1/100 - 1/300. ELISA: 1/5000. Not yet tested in other applications.
Purification :	The antibody was affinity-purified from rabbit antiserum by affinity-chromatography using epitope-specific immunogen.
Concentration :	1 mg/ml
Storage_stability :	-20°C/1 year

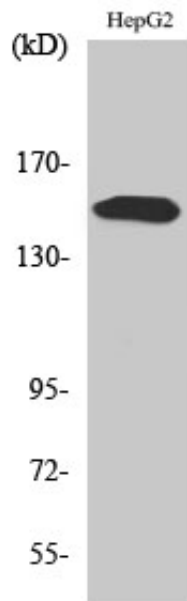


MsdS : [MSDS\\_Antibody.pdf](#)

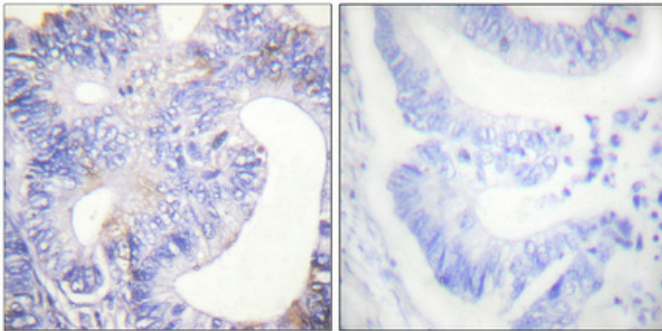
Other\_name : PLCG2; 1-phosphatidylinositol 4; 5-bisphosphate phosphodiesterase gamma-2;  
Phosphoinositide phospholipase C-gamma-2; Phospholipase C-IV; PLC-IV;  
Phospholipase C-gamma-2; PLC-gamma-2

Molecular Weight : 148KD

## Product Images



Western Blot analysis of various cells using Phospho-PLC  $\gamma$ 2 (Y753) Polyclonal Antibody



Immunohistochemical analysis of paraffin-embedded Human colon cancer. Antibody was diluted at 1:100(4 $^{\circ}$ , overnight). High-pressure and temperature Tris-EDTA, pH8.0 was used for antigen retrieval. Negative control (right) obtained from antibody was pre-absorbed by immunogen peptide.