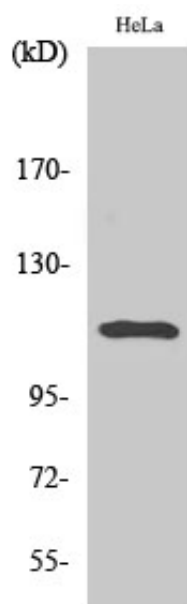


## Stat2 (phospho Tyr690) Polyclonal Antibody

|                     |   |
|---------------------|---|
| Catalog_no :        | AP0612  |
| Applications :      | WB,IHC-p,ELISA  |
| Reactivity :        | Human,Rat   |
| Category :          | 抗原抗体  |
| Size :              | 100µg/50µg/20µg   |
| Gene_name :         | STAT2   |
| Protein_name :      | Signal transducer and activator of transcription 2  |
| Humangene_id :      | <a href="#">6773</a>  |
| Humanswissprot_no : | <a href="#">P52630</a>  |
| Immunogen :         | The antiserum was produced against synthesized peptide derived from human STAT2 around the phosphorylation site of Tyr690. AA range:656-705 |
| Specificity :       | Phospho-Stat2 (Y690) Polyclonal Antibody detects endogenous levels of Stat2 protein only when phosphorylated at Y690.                       |
| Formulation :       | Liquid in PBS containing 50% glycerol, 0.5% BSA and 0.02% sodium azide.   |
| Source :            | Rabbit  |
| Dilution :          | Western Blot: 1/500 - 1/2000. Immunohistochemistry: 1/100 - 1/300. ELISA: 1/20000. Not yet tested in other applications.                    |
| Purification :      | The antibody was affinity-purified from rabbit antiserum by affinity-chromatography using epitope-specific immunogen.                       |
| Concentration :     | 1 mg/ml   |
| Storage_stability : | -20°C/1 year  |
| Msds :              | <a href="#">MSDS_Antibody.pdf</a>   |
| Other_name :        | STAT2; Signal transducer and activator of transcription 2; p113   |
| Molecular Weight :  | 113KD   |

## Product Images



Western Blot analysis of various cells using Phospho-Stat2 (Y690) Polyclonal Antibody