

Stat5 (phospho Ser726/731) Polyclonal Antibody

Catalog_no :	AP0613
Applications :	WB,IHC-p,ELISA
Reactivity :	Human,Mouse,Rat
Category :	抗原抗体
Size :	100µg/50µg/20µg
Gene_name :	STAT5A/STAT5B
Protein_name :	Signal transducer and activator of transcription 5A/B
Humangene_id :	6777
Humanswissprot_no :	P42229/P51692
Mousegene_id :	20850/20851
Ratgene_id :	24918/25126
Ratswissprot_no :	Q62771/P52632
Immunogen :	The antiserum was produced against synthesized peptide derived from human STAT5B around the phosphorylation site of Ser731. AA range:697-746
Specificity :	Phospho-Stat5 (S726/731) Polyclonal Antibody detects endogenous levels of Stat5 protein only when phosphorylated at S726/731.
Formulation :	Liquid in PBS containing 50% glycerol, 0.5% BSA and 0.02% sodium azide.
Source :	Rabbit
Dilution :	Western Blot: 1/500 - 1/2000. Immunohistochemistry: 1/100 - 1/300. ELISA: 1/40000. Not yet tested in other applications.
Purification :	The antibody was affinity-purified from rabbit antiserum by affinity-chromatography using epitope-specific immunogen.
Concentration :	1 mg/ml
Storage_stability :	-20°C/1 year
Msds :	MSDS_Antibody.pdf
Other_name :	STAT5A; STAT5; Signal transducer and activator of transcription 5A; STAT5B; Signal

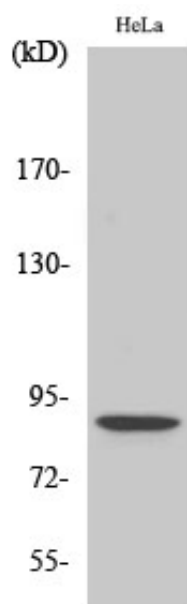


transducer and activator of transcription 5B

Molecular
Weight :

90KD

Product Images



Western Blot analysis of various cells using Phospho-Stat5 (S726/731) Polyclonal Antibody diluted at 1 : 500