

## Syk (phospho Tyr525) Polyclonal Antibody

Catalog_no :	AP0615
Applications :	WB,IHC-p,ELISA
Reactivity :	Human,Mouse,Rat,Monkey
Category :	抗原抗体
Size :	100µg/50µg/20µg
Gene_name :	SYK
Protein_name :	Tyrosine-protein kinase SYK
Humangene_id :	<a href="#">6850</a>
Humanswissprot_no :	<a href="#">P43405</a>
Mousegene_id :	<a href="#">20963</a>
Mouseswissprot_no :	<a href="#">P48025</a>
Ratgene_id :	<a href="#">25155</a>
Ratswissprot_no :	<a href="#">Q64725</a>
Immunogen :	The antiserum was produced against synthesized peptide derived from human SYK around the phosphorylation site of Tyr525. AA range:491-540
Specificity :	Phospho-Syk (Y525) Polyclonal Antibody detects endogenous levels of Syk protein only when phosphorylated at Y525.
Formulation :	Liquid in PBS containing 50% glycerol, 0.5% BSA and 0.02% sodium azide.
Source :	Rabbit
Dilution :	Western Blot: 1/500 - 1/2000. Immunohistochemistry: 1/100 - 1/300. ELISA: 1/20000. Not yet tested in other applications.
Purification :	The antibody was affinity-purified from rabbit antiserum by affinity-chromatography using epitope-specific immunogen.
Concentration :	1 mg/ml
Storage_stability :	-20°C/1 year

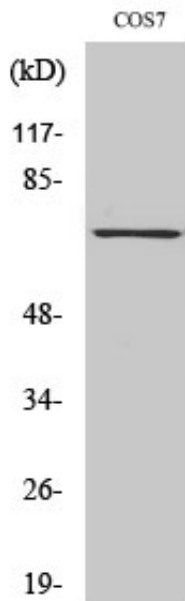


Msd : MSDS\_Antibody.pdf

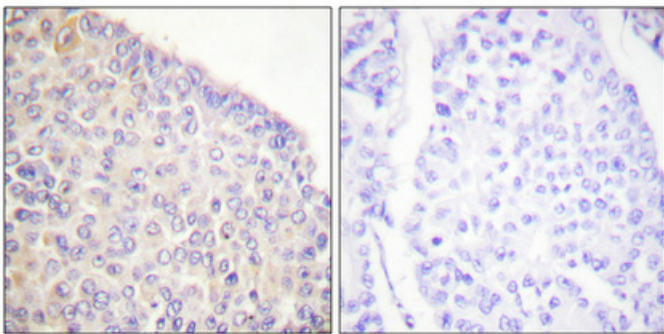
Other\_name : SYK; Tyrosine-protein kinase SYK; Spleen tyrosine kinase; p72-Syk

Molecular Weight : 72KD

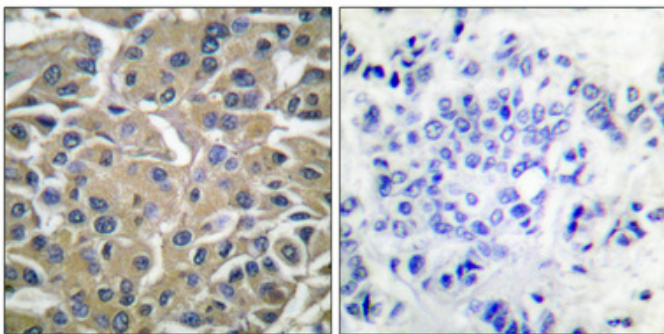
## Product Images



Western Blot analysis of various cells using Phospho-Syk (Y525) Polyclonal Antibody



Immunohistochemical analysis of paraffin-embedded Human breast cancer. Antibody was diluted at 1:100(4°,overnight). High-pressure and temperature Tris-EDTA,pH8.0 was used for antigen retrieval. Negative contrl (right) obtaned from antibody was pre-absorbed by immunogen peptide.



Immunohistochemical analysis of paraffin-embedded Human breast cancer. Antibody was diluted at 1:100(4°,overnight). High-pressure and temperature Tris-EDTA,pH8.0 was used for antigen retrieval. Negative contrl (right) obtaned from antibody was pre-absorbed by immunogen peptide.