

WNK1 (phospho Thr60) Polyclonal Antibody

Catalog_no :	AP0616
Applications :	WB,IHC-p,ELISA
Reactivity :	Human,Mouse,Rat
Category :	抗原抗体
Size :	100µg/50µg/20µg
Gene_name :	WNK1
Protein_name :	Serine/threonine-protein kinase WNK1
Humangene_id :	65125
Humanswissprot_no :	Q9H4A3
Mousegene_id :	232341
Mouseswissprot_no :	P83741
Ratgene_id :	116477
Ratswissprot_no :	Q9JIH7
Immunogen :	The antiserum was produced against synthesized peptide derived from human WNK1 around the phosphorylation site of Thr58. AA range:24-73
Specificity :	Phospho-WNK1 (T60) Polyclonal Antibody detects endogenous levels of WNK1 protein only when phosphorylated at T60.
Formulation :	Liquid in PBS containing 50% glycerol, 0.5% BSA and 0.02% sodium azide.
Source :	Rabbit
Dilution :	Western Blot: 1/500 - 1/2000. Immunohistochemistry: 1/100 - 1/300. ELISA: 1/5000. Not yet tested in other applications.
Purification :	The antibody was affinity-purified from rabbit antiserum by affinity-chromatography using epitope-specific immunogen.
Concentration :	1 mg/ml
Storage_stability :	-20°C/1 year

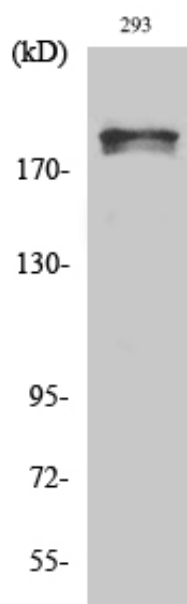


MsdS : [MSDS_Antibody.pdf](#)

Other_name : WNK1; HSN2; KDP; KIAA0344; PRKWNK1; Serine/threonine-protein kinase WNK1; Erythrocyte 65 kDa protein; p65; Kinase deficient protein; Protein kinase lysine-deficient 1; Protein kinase with no lysine 1; hWNK1

Molecular Weight : 230KD

Product Images



Western Blot analysis of various cells using Phospho-WNK1 (T60) Polyclonal Antibody