

Chk2 (phospho Thr387) Polyclonal Antibody

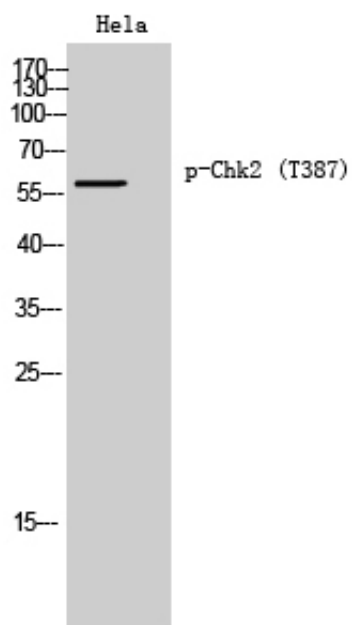
Catalog_no :	AP0624
Applications :	WB,IHC-p,ELISA
Reactivity :	Human,Mouse,Rat
Category :	抗原抗体
Size :	100µg/50µg/20µg
Gene_name :	CHEK2
Protein_name :	Serine/threonine-protein kinase Chk2
Humangene_id :	11200
Humanswissprot_no :	O96017
Mousegene_id :	50883
Mouseswissprot_no :	Q9Z265
Immunogen :	The antiserum was produced against synthesized peptide derived from human Chk2 around the phosphorylation site of Thr387. AA range:361-410
Specificity :	Phospho-Chk2 (T387) Polyclonal Antibody detects endogenous levels of Chk2 protein only when phosphorylated at T387.
Formulation :	Liquid in PBS containing 50% glycerol, 0.5% BSA and 0.02% sodium azide.
Source :	Rabbit
Dilution :	Western Blot: 1/500 - 1/2000. Immunohistochemistry: 1/100 - 1/300. ELISA: 1/5000. Not yet tested in other applications.
Purification :	The antibody was affinity-purified from rabbit antiserum by affinity-chromatography using epitope-specific immunogen.
Concentration :	1 mg/ml
Storage_stability :	-20°C/1 year
Msds :	MSDS_Antibody.pdf
Other_name :	CHEK2; CDS1; CHK2; RAD53; Serine/threonine-protein kinase Chk2; CHK2 checkpoint homolog; Cds1 homolog; Hucds1; hCds1; Checkpoint kinase 2



Molecular
Weight :

60KD

Product Images



Western Blot analysis of HeLa cells using Phospho-Chk2 (T387) Polyclonal Antibody diluted at 1 : 500 cells nucleus extracted by Minute TM Cytoplasmic and Nuclear Fractionation kit (SC-003, Invent biotech, MN, USA).