

DOR-1 (phospho Ser363) Polyclonal Antibody

Catalog_no :	AP0626
Applications :	WB,IHC-p,ELISA
Reactivity :	Human,Mouse,Rat
Category :	抗原抗体
Size :	100µg/50µg/20µg
Gene_name :	OPRD1
Protein_name :	Delta-type opioid receptor
Humangene_id	4985
:	
Humanswissprot	P41143
_no :	
Mousegene_id :	18386
Mouseswissprot	P32300
_no :	
Ratgene_id :	24613
Ratswissprot_no	P33533
:	
Immunogen :	The antiserum was produced against synthesized peptide derived from human Opioid Receptor-delta around the phosphorylation site of Ser363. AA range:323-372
Specificity :	Phospho-DOR-1 (S363) Polyclonal Antibody detects endogenous levels of DOR-1 protein only when phosphorylated at S363.
Formulation :	Liquid in PBS containing 50% glycerol, 0.5% BSA and 0.02% sodium azide.
Source :	Rabbit
Dilution :	Western Blot: 1/500 - 1/2000. Immunohistochemistry: 1/100 - 1/300. ELISA: 1/5000. Not yet tested in other applications.
Purification :	The antibody was affinity-purified from rabbit antiserum by affinity-chromatography using epitope-specific immunogen.
Concentration :	1 mg/ml
Storage_stability	-20°C/1 year
:	

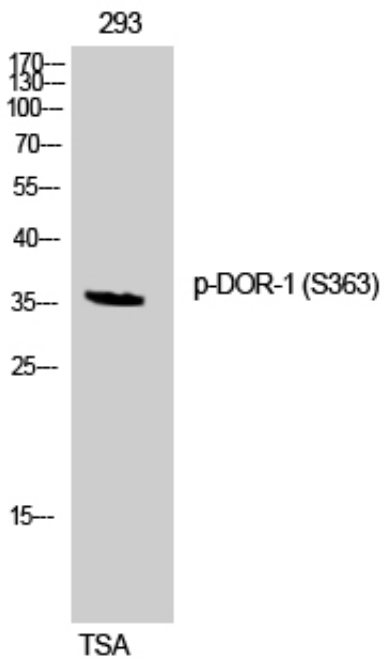


MsdS : MSDS_Antibody.pdf

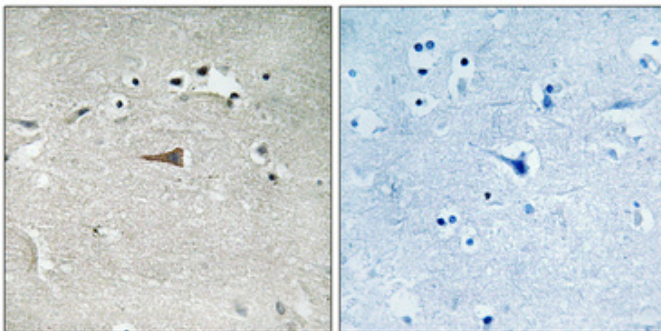
Other_name : OPRD1; OPRD; Delta-type opioid receptor; D-OR-1; DOR-1

Molecular Weight : 36KD

Product Images



Western Blot analysis of 293 cells using Phospho-DOR-1 (S363) Polyclonal Antibody



Immunohistochemical analysis of paraffin-embedded Human brain. Antibody was diluted at 1:100(4°, overnight). High-pressure and temperature Tris-EDTA, pH8.0 was used for antigen retrieval. Negative control (right) obtained from antibody was pre-absorbed by immunogen peptide.