

## c-Fos (phospho Ser362) Polyclonal Antibody

Catalog_no :	AP0631
Applications :	WB,IHC-p,ELISA
Reactivity :	Human,Mouse,Rat
Category :	抗原抗体
Size :	100µg/50µg/20µg
Gene_name :	FOS
Protein_name :	Proto-oncogene c-Fos
Humangene_id :	<a href="#">2353</a>
Humanswissprot_no :	<a href="#">P01100</a>
Mousegene_id :	<a href="#">14281</a>
Mouseswissprot_no :	<a href="#">P01101</a>
Ratgene_id :	<a href="#">140675</a>
Ratswissprot_no :	<a href="#">P12841</a>
Immunogen :	The antiserum was produced against synthesized peptide derived from human Fos around the phosphorylation site of Ser362. AA range:331-380
Specificity :	Phospho-c-Fos (S362) Polyclonal Antibody detects endogenous levels of c-Fos protein only when phosphorylated at S362.
Formulation :	Liquid in PBS containing 50% glycerol, 0.5% BSA and 0.02% sodium azide.
Source :	Rabbit
Dilution :	Western Blot: 1/500 - 1/2000. Immunohistochemistry: 1/100 - 1/300. ELISA: 1/10000. Not yet tested in other applications.
Purification :	The antibody was affinity-purified from rabbit antiserum by affinity-chromatography using epitope-specific immunogen.
Concentration :	1 mg/ml
Storage_stability :	-20°C/1 year

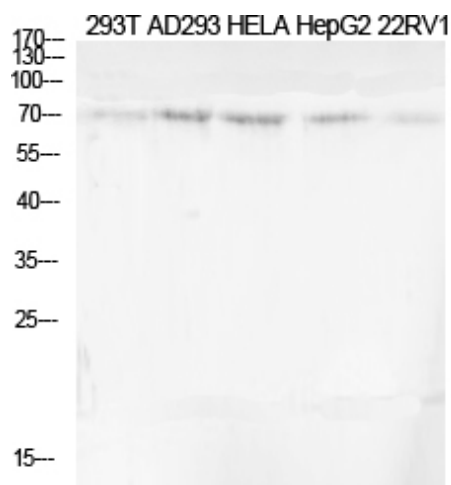


MsdS : MSDS\_Antibody.pdf

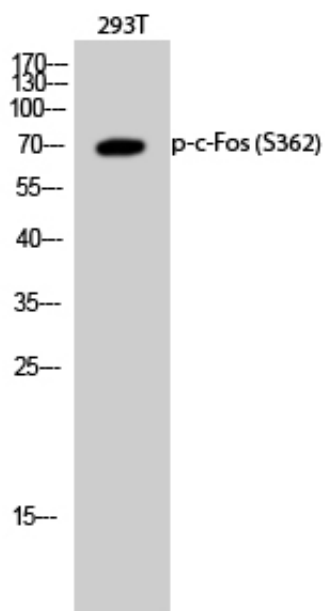
Other\_name : FOS; G0S7; Proto-oncogene c-Fos; Cellular oncogene fos; G0/G1 switch regulatory protein 7

Molecular Weight : 40KD

## Product Images



Western Blot analysis of various cells using Phospho-c-Fos (S362) Polyclonal Antibody diluted at 1 : 2000 cells nucleus extracted by Minute TM Cytoplasmic and Nuclear Fractionation kit (SC-003, Inventbiotech, MN, USA).



Western Blot analysis of 293T cells using Phospho-c-Fos (S362) Polyclonal Antibody diluted at 1 : 2000 cells nucleus extracted by Minute TM Cytoplasmic and Nuclear Fractionation kit (SC-003, Inventbiotech, MN, USA).