

Fyn (phospho Tyr530) Polyclonal Antibody

| | |
|---------------------|---|
| Catalog_no : | AP0632 |
| Applications : | WB,IHC-p,ELISA |
| Reactivity : | Human,Mouse,Rat |
| Category : | 抗原抗体 |
| Size : | 100µg/50µg/20µg |
| Gene_name : | FYN |
| Protein_name : | Tyrosine-protein kinase Fyn |
| Humangene_id : | 2534 |
| Humanswissprot_no : | P06241 |
| Mousegene_id : | 14360 |
| Mouseswissprot_no : | P39688 |
| Ratgene_id : | 25150 |
| Ratswissprot_no : | Q62844 |
| Immunogen : | The antiserum was produced against synthesized peptide derived from human Fyn around the phosphorylation site of Tyr530. AA range:488-537 |
| Specificity : | Phospho-Fyn (Y530) Polyclonal Antibody detects endogenous levels of Fyn protein only when phosphorylated at Y530. |
| Formulation : | Liquid in PBS containing 50% glycerol, 0.5% BSA and 0.02% sodium azide. |
| Source : | Rabbit |
| Dilution : | Western Blot: 1/500 - 1/2000. Immunohistochemistry: 1/100 - 1/300. ELISA: 1/5000. Not yet tested in other applications. |
| Purification : | The antibody was affinity-purified from rabbit antiserum by affinity-chromatography using epitope-specific immunogen. |
| Concentration : | 1 mg/ml |
| Storage_stability : | -20°C/1 year |

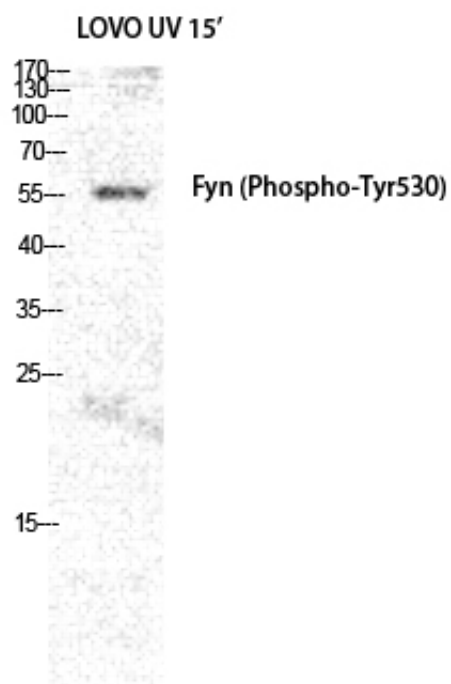


MsdS : [MSDS_Antibody.pdf](#)

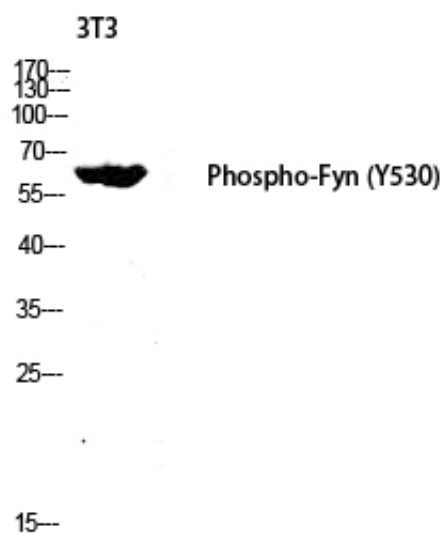
Other_name : FYN; Tyrosine-protein kinase Fyn; Proto-oncogene Syn; Proto-oncogene c-Fyn; Src-like kinase; SLK; p59-Fyn

Molecular Weight : 60KD

Product Images



Western Blot analysis of LOVO+UV cells using Phospho-Fyn (Y530) Polyclonal Antibody diluted at 1 : 2000



Western blot analysis of 3T3 lysis using Phospho-Fyn (Y530) antibody. Antibody was diluted at 1:2000