

Glycogen Synthase 1 (phospho Ser645) Polyclonal Antibody

Catalog_no :	AP0633
Applications :	WB,IHC-p,ELISA
Reactivity :	Human,Mouse,Rat
Category :	抗原抗体
Size :	100µg/50µg/20µg
Gene_name :	GYS1
Protein_name :	Glycogen [starch] synthase muscle
Humangene_id :	2997
Humanswissprot_no :	P13807
Mousegene_id :	14936
Mouseswissprot_no :	Q9Z1E4
Ratgene_id :	690987
Ratswissprot_no :	A2RRU1
Immunogen :	The antiserum was produced against synthesized peptide derived from human Glycogen Synthase around the phosphorylation site of Ser645. AA range:611-660
Specificity :	Phospho-Glycogen Synthase 1 (S645) Polyclonal Antibody detects endogenous levels of Glycogen Synthase 1 protein only when phosphorylated at S645.
Formulation :	Liquid in PBS containing 50% glycerol, 0.5% BSA and 0.02% sodium azide.
Source :	Rabbit
Dilution :	Western Blot: 1/500 - 1/2000. Immunohistochemistry: 1/100 - 1/300. ELISA: 1/5000. Not yet tested in other applications.
Purification :	The antibody was affinity-purified from rabbit antiserum by affinity-chromatography using epitope-specific immunogen.
Concentration :	1 mg/ml
Storage_stability :	-20°C/1 year

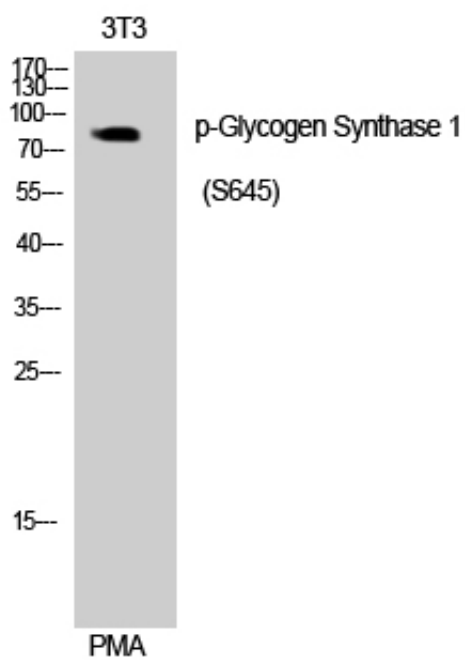


Msd : MSDS_Antibody.pdf

Other_name : GYS1; GYS; Glycogen [starch] synthase; muscle

Molecular Weight : 83KD

Product Images



Western Blot analysis of 293 cells using Phospho-Glycogen Synthase 1 (S645) Polyclonal Antibody