

## GRF-1 (phospho Tyr1105) Polyclonal Antibody

Catalog_no :	AP0635
Applications :	WB,IHC-p,ELISA
Reactivity :	Human,Mouse,Rat
Category :	抗原抗体
Size :	100µg/50µg/20µg
Gene_name :	ARHGAP35
Protein_name :	Rho GTPase-activating protein 35
Humangene_id	<a href="#">2909</a>
:	
Humanswissprot	<a href="#">Q9NRY4</a>
_no :	
Mousegene_id :	<a href="#">232906</a>
Mouseswissprot	<a href="#">Q91YM2</a>
_no :	
Ratswissprot_no	<a href="#">P81128</a>
:	
Immunogen :	The antiserum was produced against synthesized peptide derived from human GRF-1 around the phosphorylation site of Tyr1105. AA range:1071-1120
Specificity :	Phospho-GRF-1 (Y1105) Polyclonal Antibody detects endogenous levels of GRF-1 protein only when phosphorylated at Y1105.
Formulation :	Liquid in PBS containing 50% glycerol, 0.5% BSA and 0.02% sodium azide.
Source :	Rabbit
Dilution :	Western Blot: 1/500 - 1/2000. Immunohistochemistry: 1/100 - 1/300. ELISA: 1/10000. Not yet tested in other applications.
Purification :	The antibody was affinity-purified from rabbit antiserum by affinity-chromatography using epitope-specific immunogen.
Concentration :	1 mg/ml
Storage_stability	-20°C/1 year
:	
Msds :	<a href="#">MSDS_Antibody.pdf</a>



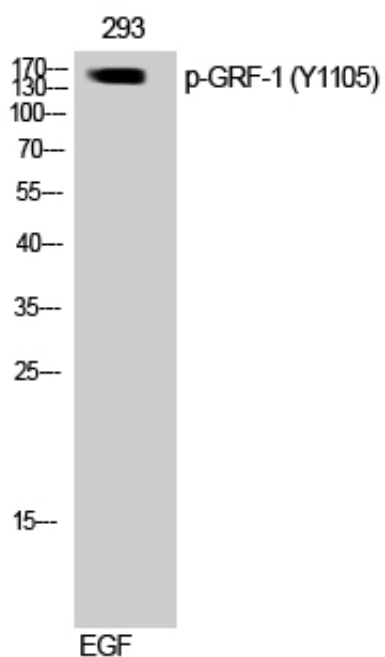
Other\_name : ARHGAP35; GRF1; GRLF1; KIAA1722; Rho GTPase-activating protein 35; Glucocorticoid receptor DNA-binding factor 1; Glucocorticoid receptor repression factor 1; GRF-1; Rho GAP p190A; p190-A

---

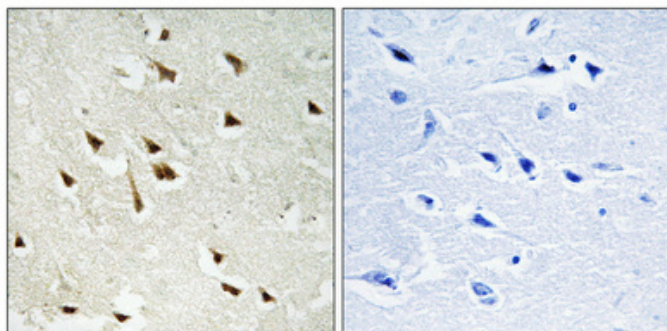
Molecular Weight : 160KD

---

## Product Images



Western Blot analysis of 3T3 cells using Phospho-GRF-1 (Y1105) Polyclonal Antibody



Immunohistochemical analysis of paraffin-embedded Human brain. Antibody was diluted at 1:100(4°,overnight). High-pressure and temperature Tris-EDTA,pH8.0 was used for antigen retrieval. Negative contrl (right) obtaned from antibody was pre-absorbed by immunogen peptide.