

## HSL (phospho Ser552) Polyclonal Antibody

|                     |   |
|---------------------|---|
| Catalog_no :        | AP0636  |
| Applications :      | WB,IHC-p,ELISA  |
| Reactivity :        | Human,Mouse,Rat   |
| Category :          | 抗原抗体  |
| Size :              | 100µg/50µg/20µg   |
| Gene_name :         | LIPE  |
| Protein_name :      | Hormone-sensitive lipase  |
| Humangene_id :      | <a href="#">3991</a>  |
| Humanswissprot_no : | <a href="#">Q05469</a>  |
| Mousegene_id :      | <a href="#">16890</a>   |
| Mouseswissprot_no : | <a href="#">P54310</a>  |
| Ratgene_id :        | <a href="#">25330</a>   |
| Ratswissprot_no :   | <a href="#">P15304</a>  |
| Immunogen :         | The antiserum was produced against synthesized peptide derived from human HSL around the phosphorylation site of Ser552. AA range:518-567 |
| Specificity :       | Phospho-HSL (S552) Polyclonal Antibody detects endogenous levels of HSL protein only when phosphorylated at S552.                         |
| Formulation :       | Liquid in PBS containing 50% glycerol, 0.5% BSA and 0.02% sodium azide.   |
| Source :            | Rabbit  |
| Dilution :          | Western Blot: 1/500 - 1/2000. Immunohistochemistry: 1/100 - 1/300. ELISA: 1/5000. Not yet tested in other applications.                   |
| Purification :      | The antibody was affinity-purified from rabbit antiserum by affinity-chromatography using epitope-specific immunogen.                     |
| Concentration :     | 1 mg/ml   |
| Storage_stability : | -20°C/1 year  |

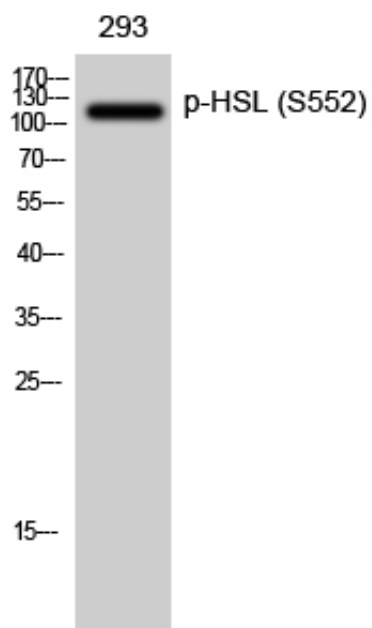


Msd : MSDS\_Antibody.pdf

Other\_name : LIPE; Hormone-sensitive lipase; HSL

Molecular Weight : 117KD

## Product Images



Western Blot analysis of 293 cells using Phospho-HSL (S552) Polyclonal Antibody diluted at 1 : 500