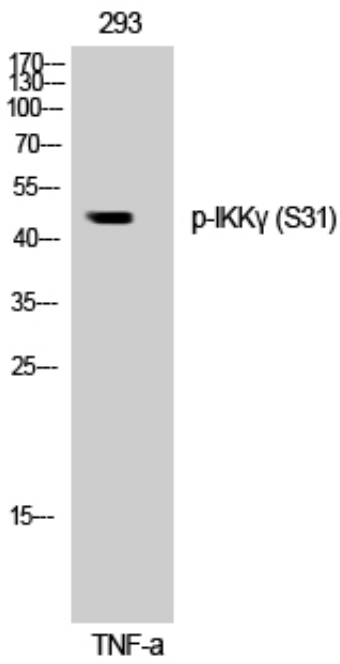


IKKy (phospho Ser31) Polyclonal Antibody

Catalog_no :	AP0638
Applications :	WB,IHC-p,ELISA
Reactivity :	Human
Category :	抗原抗体
Size :	100µg/50µg/20µg
Gene_name :	IKBKG
Protein_name :	NF-kappa-B essential modulator
Humangene_id :	8517
Humanswissprot_no :	Q9Y6K9
Immunogen :	The antiserum was produced against synthesized peptide derived from human IKK-gamma around the phosphorylation site of Ser31. AA range:16-65
Specificity :	Phospho-IKKy (S31) Polyclonal Antibody detects endogenous levels of IKKy protein only when phosphorylated at S31.
Formulation :	Liquid in PBS containing 50% glycerol, 0.5% BSA and 0.02% sodium azide.
Source :	Rabbit
Dilution :	Western Blot: 1/500 - 1/2000. Immunohistochemistry: 1/100 - 1/300. ELISA: 1/10000. Not yet tested in other applications.
Purification :	The antibody was affinity-purified from rabbit antiserum by affinity-chromatography using epitope-specific immunogen.
Concentration :	1 mg/ml
Storage_stability :	-20°C/1 year
Msds :	MSDS_Antibody.pdf
Other_name :	IKBKG; FIP3; NEMO; NF-kappa-B essential modulator; NEMO; FIP-3; IκB kinase-associated protein 1; IKKAP1; Inhibitor of nuclear factor kappa-B kinase subunit gamma; I-kappa-B kinase subunit gamma; IKK-gamma; IκB kinase subunit gamma; NF
Molecular Weight :	48KD

Product Images



Western Blot analysis of 293 cells using Phospho-IKK γ (S31) Polyclonal Antibody