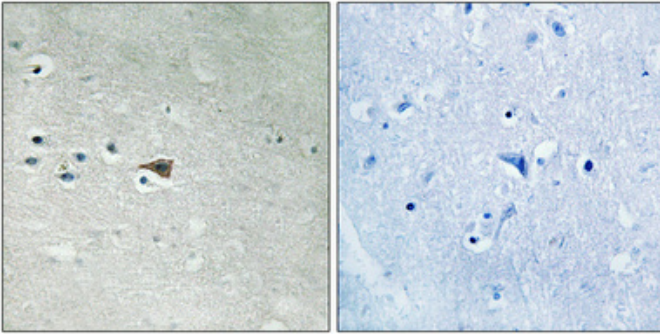


Arrestin- β -1 (phospho Ser412) Polyclonal Antibody

Catalog_no :	AP0642
Applications :	WB,IHC-p,ELISA
Reactivity :	Human,Monkey
Category :	抗原抗体
Size :	100 μ g/50 μ g/20 μ g
Gene_name :	ARRB1
Protein_name :	Beta-arrestin-1
Humangene_id	408
:	
Humanswissprot	P49407
_no :	
Immunogen :	The antiserum was produced against synthesized peptide derived from human Arrestin 1 around the phosphorylation site of Ser412. AA range:369-418
Specificity :	Phospho-Arrestin- β -1 (S412) Polyclonal Antibody detects endogenous levels of Arrestin- β -1 protein only when phosphorylated at S412.
Formulation :	Liquid in PBS containing 50% glycerol, 0.5% BSA and 0.02% sodium azide.
Source :	Rabbit
Dilution :	Western Blot: 1/500 - 1/2000. Immunohistochemistry: 1/100 - 1/300. ELISA: 1/10000. Not yet tested in other applications.
Purification :	The antibody was affinity-purified from rabbit antiserum by affinity-chromatography using epitope-specific immunogen.
Concentration :	1 mg/ml
Storage_stability	-20°C/1 year
:	
Msds :	MSDS_Antibody.pdf
Other_name :	ARRB1; ARR1; Beta-arrestin-1; Arrestin beta-1
Molecular Weight :	47KD

Product Images



Immunohistochemical analysis of paraffin-embedded Human brain. Antibody was diluted at 1:100(4°,overnight). High-pressure and temperature Tris-EDTA,pH8.0 was used for antigen retrieval. Negative contrl (right) obtaned from antibody was pre-absorbed by immunogen peptide.