

Bcl-2 (phospho Ser87) Polyclonal Antibody

Catalog_no :	AP0646
Applications :	WB,IHC-p,ELISA
Reactivity :	Human,Mouse,Rat
Category :	抗原抗体
Size :	100µg/50µg/20µg
Gene_name :	BCL2
Protein_name :	Apoptosis regulator Bcl-2
Humangene_id	596
:	
Humanswissprot	P10415
_no :	
Mousegene_id :	12043
Mouseswissprot	P10417
_no :	
Ratgene_id :	24224
Ratswissprot_no	P49950
:	
Immunogen :	The antiserum was produced against synthesized peptide derived from human BCL-2 around the phosphorylation site of Ser87. AA range:61-110
Specificity :	Phospho-Bcl-2 (S87) Polyclonal Antibody detects endogenous levels of Bcl-2 protein only when phosphorylated at S87.
Formulation :	Liquid in PBS containing 50% glycerol, 0.5% BSA and 0.02% sodium azide.
Source :	Rabbit
Dilution :	Western Blot: 1/500 - 1/2000. Immunohistochemistry: 1/100 - 1/300. ELISA: 1/5000. Not yet tested in other applications.
Purification :	The antibody was affinity-purified from rabbit antiserum by affinity-chromatography using epitope-specific immunogen.
Concentration :	1 mg/ml
Storage_stability	-20°C/1 year
:	

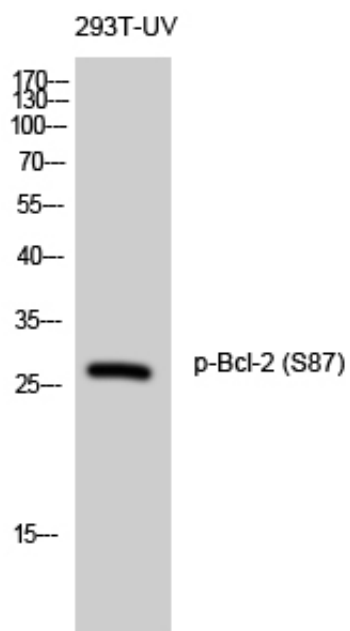


Msd : MSDS_Antibody.pdf

Other_name : BCL2; Apoptosis regulator Bcl-2

Molecular Weight : 28KD

Product Images



Western Blot analysis of 293T-UV cells using Phospho-Bcl-2 (S87) Polyclonal Antibody diluted at 1 : 500