

## FoxO1A (phospho Ser329) Polyclonal Antibody

Catalog_no :	AP0652
Applications :	WB,IHC-p,ELISA
Reactivity :	Human,Mouse,Rat
Category :	抗原抗体
Size :	100µg/50µg/20µg
Gene_name :	FOXO1
Protein_name :	Forkhead box protein O1
Humangene_id :	<a href="#">2308</a>
Humanswissprot_no :	<a href="#">Q12778</a>
Mousegene_id :	<a href="#">56458</a>
Mouseswissprot_no :	<a href="#">Q9R1E0</a>
Ratgene_id :	<a href="#">84482</a>
Ratswissprot_no :	<a href="#">G3V7R4</a>
Immunogen :	The antiserum was produced against synthesized peptide derived from human FOXO1A around the phosphorylation site of Ser329. AA range:295-344
Specificity :	Phospho-FoxO1A (S329) Polyclonal Antibody detects endogenous levels of FoxO1A protein only when phosphorylated at S329.
Formulation :	Liquid in PBS containing 50% glycerol, 0.5% BSA and 0.02% sodium azide.
Source :	Rabbit
Dilution :	Western Blot: 1/500 - 1/2000. Immunohistochemistry: 1/100 - 1/300. ELISA: 1/5000. Not yet tested in other applications.
Purification :	The antibody was affinity-purified from rabbit antiserum by affinity-chromatography using epitope-specific immunogen.
Concentration :	1 mg/ml
Storage_stability :	-20°C/1 year

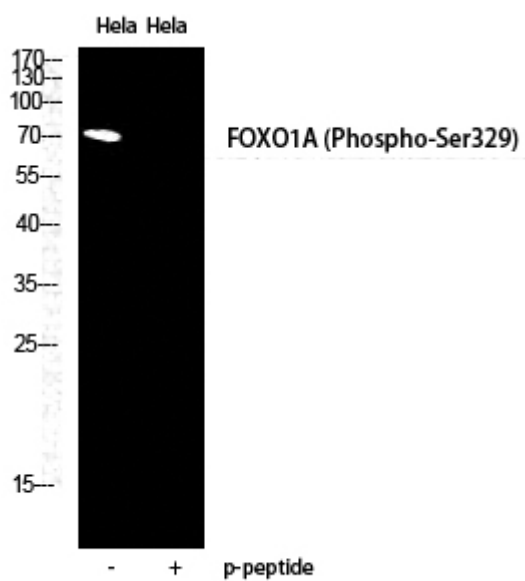


MsdS : MSDS\_Antibody.pdf

Other\_name : FOXO1; FKHR; FOXO1A; Forkhead box protein O1; Forkhead box protein O1A; Forkhead in rhabdomyosarcoma

Molecular Weight : 70KD

## Product Images



Western Blot analysis of HELA cells using Phospho-FoxO1A (S329) Polyclonal Antibody diluted at 1 : 2000