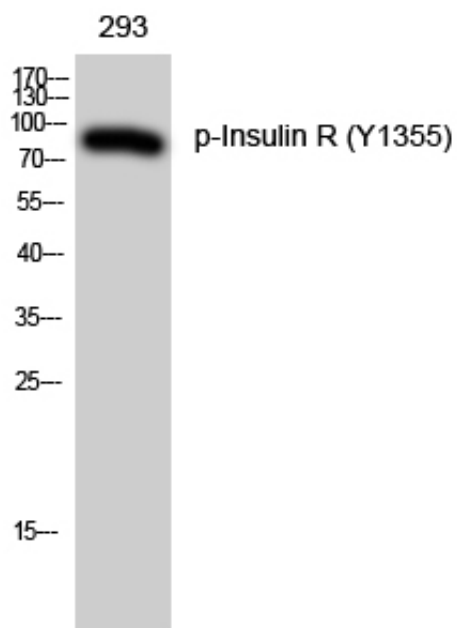


Insulin R (phospho Tyr1355) Polyclonal Antibody

Catalog_no :	AP0655
Applications :	WB,IHC-p,ELISA
Reactivity :	Human
Category :	抗原抗体
Size :	100µg/50µg/20µg
Gene_name :	INSR
Protein_name :	Insulin receptor
Humangene_id :	3643
Humanswissprot_no :	P06213
Immunogen :	The antiserum was produced against synthesized peptide derived from human IR around the phosphorylation site of Tyr1355. AA range:1326-1375
Specificity :	Phospho-Insulin R (Y1355) Polyclonal Antibody detects endogenous levels of Insulin R protein only when phosphorylated at Y1355.
Formulation :	Liquid in PBS containing 50% glycerol, 0.5% BSA and 0.02% sodium azide.
Source :	Rabbit
Dilution :	Western Blot: 1/500 - 1/2000. Immunohistochemistry: 1/100 - 1/300. ELISA: 1/10000. Not yet tested in other applications.
Purification :	The antibody was affinity-purified from rabbit antiserum by affinity-chromatography using epitope-specific immunogen.
Concentration :	1 mg/ml
Storage_stability :	-20°C/1 year
Msds :	MSDS_Antibody.pdf
Other_name :	INSR; Insulin receptor; IR; CD antigen CD220
Molecular Weight :	95KD

Product Images



Western Blot analysis of 293 cells using Phospho-Insulin R (Y1355) Polyclonal Antibody