

p70 S6 kinase  $\alpha$  (phospho Ser371) Polyclonal Antibody

|                     |   |
|---------------------|---|
| Catalog_no :        | AP0664  |
| Applications :      | WB,IHC-p,ELISA  |
| Reactivity :        | Human,Mouse,Rat   |
| Category :          | 抗原抗体  |
| Size :              | 100 $\mu$ g/50 $\mu$ g/20 $\mu$ g   |
| Gene_name :         | RPS6KB1   |
| Protein_name :      | Ribosomal protein S6 kinase beta-1  |
| Humangene_id :      | <a href="#">6198</a>  |
| Humanswissprot_no : | <a href="#">P23443</a>  |
| Mousegene_id :      | <a href="#">72508</a>   |
| Mouseswissprot_no : | <a href="#">Q8BSK8</a>  |
| Ratgene_id :        | <a href="#">83840</a>   |
| Ratswissprot_no :   | <a href="#">P67999</a>  |
| Immunogen :         | The antiserum was produced against synthesized peptide derived from human p70 S6 Kinase around the phosphorylation site of Ser371. AA range:337-386     |
| Specificity :       | Phospho-p70 S6 kinase $\alpha$ (S371) Polyclonal Antibody detects endogenous levels of p70 S6 kinase $\alpha$ protein only when phosphorylated at S371. |
| Formulation :       | Liquid in PBS containing 50% glycerol, 0.5% BSA and 0.02% sodium azide.   |
| Source :            | Rabbit  |
| Dilution :          | Western Blot: 1/500 - 1/2000. Immunohistochemistry: 1/100 - 1/300. ELISA: 1/20000. Not yet tested in other applications.                                |
| Purification :      | The antibody was affinity-purified from rabbit antiserum by affinity-chromatography using epitope-specific immunogen.                                   |
| Concentration :     | 1 mg/ml   |
| Storage_stability : | -20°C/1 year  |

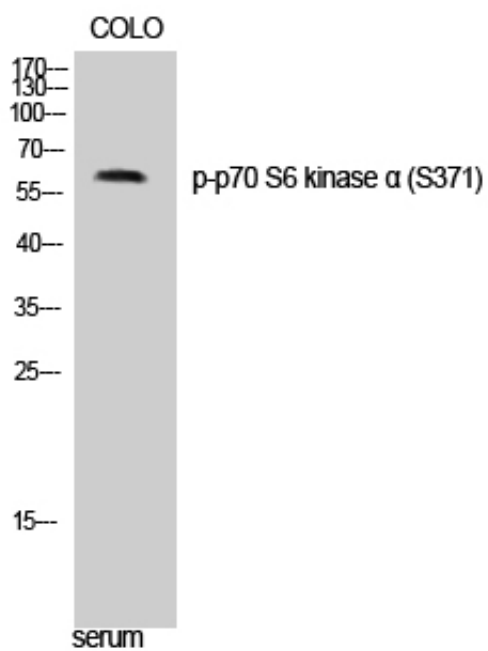


MsdS : [MSDS\\_Antibody.pdf](#)

Other\_name : [RPS6KB1; STK14A; Ribosomal protein S6 kinase beta-1; S6K-beta-1; S6K1; 70 kDa ribosomal protein S6 kinase 1; P70S6K1; p70-S6K 1; Ribosomal protein S6 kinase I; Serine/threonine-protein kinase 14A; p70 ribosomal S6 kinase alpha; p70 S6 kinas](#)

Molecular Weight : [60KD](#)

## Product Images



Western Blot analysis of COLO cells using Phospho-p70 S6 kinase  $\alpha$  (S371) Polyclonal Antibody diluted at 1 : 500