

PAK $\alpha$  (phospho Thr212) Polyclonal Antibody

Catalog_no :	AP0666
Applications :	WB,IHC-p,ELISA
Reactivity :	Human,Mouse,Rat
Category :	抗原抗体
Size :	100 $\mu$ g/50 $\mu$ g/20 $\mu$ g
Gene_name :	PAK1
Protein_name :	Serine/threonine-protein kinase PAK 1
Humangene_id	<a href="#">5058</a>
:	
Humanswissprot	<a href="#">Q13153</a>
_no :	
Mouseswissprot	<a href="#">O88643</a>
_no :	
Ratgene_id :	<a href="#">29431</a>
Ratswissprot_no	<a href="#">P35465</a>
:	
Immunogen :	The antiserum was produced against synthesized peptide derived from human PAK1 around the phosphorylation site of Thr212. AA range:178-227
Specificity :	Phospho-PAK $\alpha$ (T212) Polyclonal Antibody detects endogenous levels of PAK $\alpha$ protein only when phosphorylated at T212.
Formulation :	Liquid in PBS containing 50% glycerol, 0.5% BSA and 0.02% sodium azide.
Source :	Rabbit
Dilution :	Western Blot: 1/500 - 1/2000. Immunohistochemistry: 1/100 - 1/300. ELISA: 1/10000. Not yet tested in other applications.
Purification :	The antibody was affinity-purified from rabbit antiserum by affinity-chromatography using epitope-specific immunogen.
Concentration :	1 mg/ml
Storage_stability	-20°C/1 year
:	
Msds :	<a href="#">MSDS_Antibody.pdf</a>



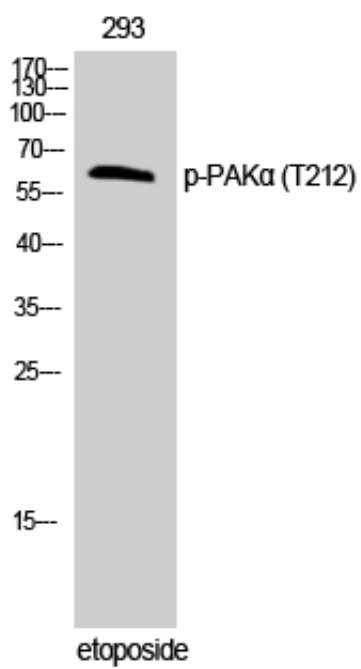
Other\_name : PAK1; Serine/threonine-protein kinase PAK 1; Alpha-PAK; p21-activated kinase 1; PAK-1; p65-PAK

---

Molecular Weight : 65KD

---

## Product Images



Western Blot analysis of 293 cells using Phospho-PAK $\alpha$  (T212) Polyclonal Antibody