

SMC1 (phospho Ser966) Polyclonal Antibody

Catalog_no :	AP0671
Applications :	WB,IHC-p,ELISA
Reactivity :	Human,Mouse,Rat
Category :	抗原抗体
Size :	100µg/50µg/20µg
Gene_name :	SMC1A
Protein_name :	Structural maintenance of chromosomes protein 1A
Humangene_id :	8243
Humanswissprot_no :	Q14683
Mousegene_id :	24061
Mouseswissprot_no :	Q9CU62
Ratgene_id :	63996
Ratswissprot_no :	Q9Z1M9
Immunogen :	The antiserum was produced against synthesized peptide derived from human SMC1 around the phosphorylation site of Ser966. AA range:932-981
Specificity :	Phospho-SMC1 (S966) Polyclonal Antibody detects endogenous levels of SMC1 protein only when phosphorylated at S966.
Formulation :	Liquid in PBS containing 50% glycerol, 0.5% BSA and 0.02% sodium azide.
Source :	Rabbit
Dilution :	Western Blot: 1/500 - 1/2000. Immunohistochemistry: 1/100 - 1/300. ELISA: 1/10000. Not yet tested in other applications.
Purification :	The antibody was affinity-purified from rabbit antiserum by affinity-chromatography using epitope-specific immunogen.
Concentration :	1 mg/ml
Storage_stability :	-20°C/1 year

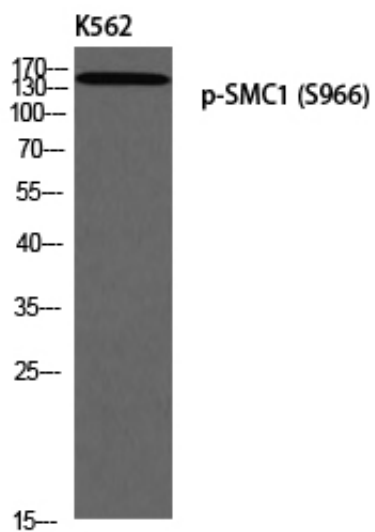


MsdS : [MSDS_Antibody.pdf](#)

Other_name : SMC1A; DXS423E; KIAA0178; SB1.8; SMC1; SMC1L1; Structural maintenance of chromosomes protein 1A; SMC protein 1A; SMC-1-alpha; SMC-1A; Sb1.8

Molecular Weight : 160KD

Product Images



Western blot analysis of K562 using p-SMC1 (S966) antibody.