

p23 (phospho Ser113) Polyclonal Antibody

Catalog_no :	AP0673
Applications :	WB,IHC-p,ELISA
Reactivity :	Human,Mouse,Rat
Category :	抗原抗体
Size :	100µg/50µg/20µg
Gene_name :	PTGES3
Protein_name :	Prostaglandin E synthase 3
Humangene_id	10728
:	
Humanswissprot	Q15185
_no :	
Mousegene_id :	1.00044e+008
Mouseswissprot	Q9R0Q7
_no :	
Ratgene_id :	362809
Ratswissprot_no	P83868
:	
Immunogen :	The antiserum was produced against synthesized peptide derived from human TEBP around the phosphorylation site of Ser113. AA range:79-128
Specificity :	Phospho-p23 (S113) Polyclonal Antibody detects endogenous levels of p23 protein only when phosphorylated at S113.
Formulation :	Liquid in PBS containing 50% glycerol, 0.5% BSA and 0.02% sodium azide.
Source :	Rabbit
Dilution :	Western Blot: 1/500 - 1/2000. Immunohistochemistry: 1/100 - 1/300. ELISA: 1/10000. Not yet tested in other applications.
Purification :	The antibody was affinity-purified from rabbit antiserum by affinity-chromatography using epitope-specific immunogen.
Concentration :	1 mg/ml
Storage_stability	-20°C/1 year
:	

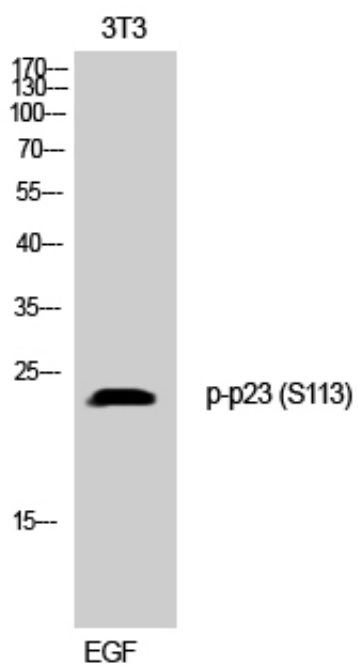


Msd : [MSDS_Antibody.pdf](#)

Other_name : PTGES3; P23; TEBP; Prostaglandin E synthase 3; Cytosolic prostaglandin E2 synthase; cPGES; Hsp90 co-chaperone; Progesterone receptor complex p23; Telomerase-binding protein p23

Molecular Weight : 24KD

Product Images



Western Blot analysis of 3T3 cells using Phospho-p23 (S113) Polyclonal Antibody