

Tuberin (phospho Ser939) Polyclonal Antibody

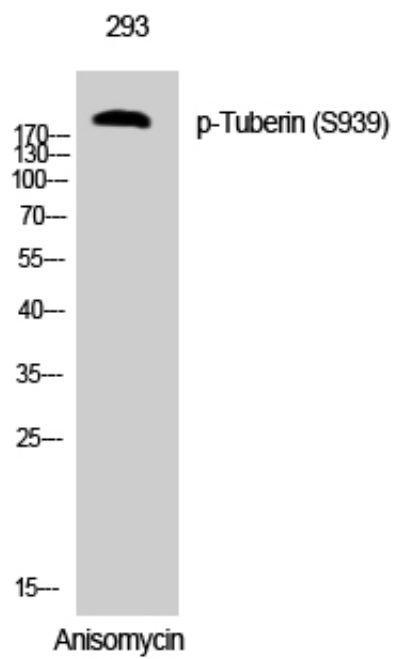
Catalog_no :	AP0676
Applications :	WB,IHC-p,ELISA
Reactivity :	Human,Mouse,Rat
Category :	抗原抗体
Size :	100µg/50µg/20µg
Gene_name :	TSC2
Protein_name :	Tuberin
Humangene_id :	7249
Humanswissprot_no :	P49815
Mouseswissprot_no :	Q61037
Ratgene_id :	24855
Ratswissprot_no :	P49816
Immunogen :	The antiserum was produced against synthesized peptide derived from human Tuberin/TSC2 around the phosphorylation site of Ser939. AA range:905-954
Specificity :	Phospho-Tuberin (S939) Polyclonal Antibody detects endogenous levels of Tuberin protein only when phosphorylated at S939.
Formulation :	Liquid in PBS containing 50% glycerol, 0.5% BSA and 0.02% sodium azide.
Source :	Rabbit
Dilution :	Western Blot: 1/500 - 1/2000. Immunohistochemistry: 1/100 - 1/300. ELISA: 1/10000. Not yet tested in other applications.
Purification :	The antibody was affinity-purified from rabbit antiserum by affinity-chromatography using epitope-specific immunogen.
Concentration :	1 mg/ml
Storage_stability :	-20°C/1 year
Msds :	MSDS_Antibody.pdf



Other_name : TSC2; TSC4; Tuberin; Tuberous sclerosis 2 protein

Molecular Weight : 200KD

Product Images



Western Blot analysis of 293 cells using Phospho-Tuberin (S939) Polyclonal Antibody