

## WAVE1 (phospho Tyr125) Polyclonal Antibody

Catalog_no :	AP0680
Applications :	WB,IHC-p,IF,ELISA
Reactivity :	Human,Mouse,Rat
Category :	抗原抗体
Size :	100µg/50µg/20µg
Gene_name :	WASF1
Protein_name :	Wiskott-Aldrich syndrome protein family member 1
Humangene_id :	<a href="#">8936</a>
Humanswissprot_no :	<a href="#">Q92558</a>
Mousegene_id :	<a href="#">83767</a>
Mouseswissprot_no :	<a href="#">Q8R5H6</a>
Ratgene_id :	<a href="#">294568</a>
Ratswissprot_no :	<a href="#">Q5BJU7</a>
Immunogen :	The antiserum was produced against synthesized peptide derived from human WAVE1 around the phosphorylation site of Tyr125. AA range:91-140
Specificity :	Phospho-WAVE1 (Y125) Polyclonal Antibody detects endogenous levels of WAVE1 protein only when phosphorylated at Y125.
Formulation :	Liquid in PBS containing 50% glycerol, 0.5% BSA and 0.02% sodium azide.
Source :	Rabbit
Dilution :	Western Blot: 1/500 - 1/2000. Immunohistochemistry: 1/100 - 1/300. Immunofluorescence: 1/200 - 1/1000. ELISA: 1/5000. Not yet tested in other applications.
Purification :	The antibody was affinity-purified from rabbit antiserum by affinity-chromatography using epitope-specific immunogen.
Concentration :	1 mg/ml
Storage_stability :	-20°C/1 year

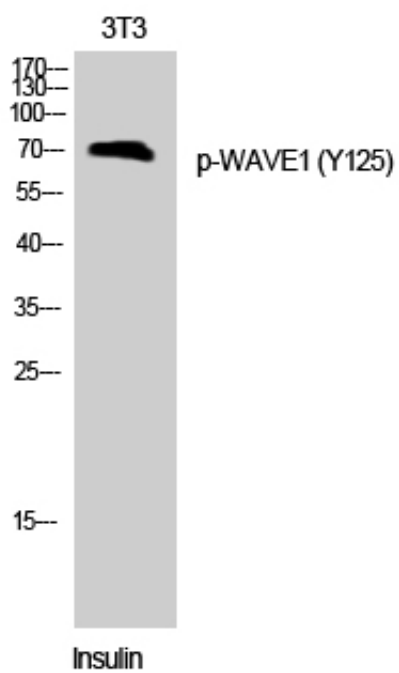


MsdS : MSDS\_Antibody.pdf

Other\_name : WASF1; KIAA0269; SCAR1; WAVE1; Wiskott-Aldrich syndrome protein family member 1; WASP family protein member 1; Protein WAVE-1; Verprolin homology domain-containing protein 1

Molecular Weight : 70KD

## Product Images



Western Blot analysis of 3T3 cells using Phospho-WAVE1 (Y125) Polyclonal Antibody