

PAKy (phospho Ser20) Polyclonal Antibody

Catalog_no :	AP0700
Applications :	WB,IHC-p,ELISA
Reactivity :	Human,Mouse,Rat
Category :	抗原抗体
Size :	100µg/50µg/20µg
Gene_name :	PAK2
Protein_name :	Serine/threonine-protein kinase PAK 2
Humangene_id	5062
:	
Humanswissprot	Q13177
_no :	
Mousegene_id :	224105
Mouseswissprot	Q8CIN4
_no :	
Ratgene_id :	1.00911e+008
Ratswissprot_no	Q64303
:	
Immunogen :	The antiserum was produced against synthesized peptide derived from human PAK2 around the phosphorylation site of Ser20. AA range:5-54
Specificity :	Phospho-PAKy (S20) Polyclonal Antibody detects endogenous levels of PAKy protein only when phosphorylated at S20.
Formulation :	Liquid in PBS containing 50% glycerol, 0.5% BSA and 0.02% sodium azide.
Source :	Rabbit
Dilution :	Western Blot: 1/500 - 1/2000. Immunohistochemistry: 1/100 - 1/300. ELISA: 1/40000. Not yet tested in other applications.
Purification :	The antibody was affinity-purified from rabbit antiserum by affinity-chromatography using epitope-specific immunogen.
Concentration :	1 mg/ml
Storage_stability	-20°C/1 year
:	

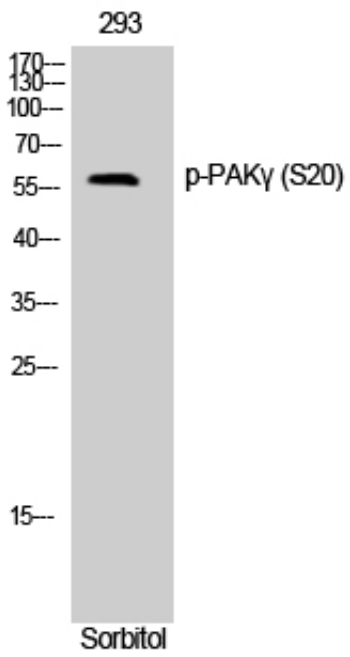


MsdS : MSDS_Antibody.pdf

Other_name : PAK2; Serine/threonine-protein kinase PAK 2; Gamma-PAK; PAK65; S6/H4 kinase; p21-activated kinase 2; PAK-2; p58

Molecular Weight : 62KD

Product Images



Western Blot analysis of 293 cells using Phospho-PAK γ (S20) Polyclonal Antibody