

PLC  $\beta$ 3 (phospho Ser537) Polyclonal Antibody

Catalog_no :	AP0707
Applications :	WB,IHC-p,ELISA
Reactivity :	Human,Mouse,Rat
Category :	抗原抗体
Size :	100 $\mu$ g/50 $\mu$ g/20 $\mu$ g
Gene_name :	PLCB3
Protein_name :	1-phosphatidylinositol 4,5-bisphosphate phosphodiesterase beta-3
Humangene_id	<a href="#">5331</a>
:	
Humanswissprot	<a href="#">Q001970</a>
_no :	
Mouseswissprot	<a href="#">P51432</a>
_no :	
Ratswissprot_no	<a href="#">Q99JE6</a>
:	
Immunogen :	The antiserum was produced against synthesized peptide derived from human PLC beta3 around the phosphorylation site of Ser537. AA range:503-552
Specificity :	Phospho-PLC $\beta$ 3 (S537) Polyclonal Antibody detects endogenous levels of PLC $\beta$ 3 protein only when phosphorylated at S537.
Formulation :	Liquid in PBS containing 50% glycerol, 0.5% BSA and 0.02% sodium azide.
Source :	Rabbit
Dilution :	Western Blot: 1/500 - 1/2000. Immunohistochemistry: 1/100 - 1/300. ELISA: 1/10000. Not yet tested in other applications.
Purification :	The antibody was affinity-purified from rabbit antiserum by affinity-chromatography using epitope-specific immunogen.
Concentration :	1 mg/ml
Storage_stability	-20°C/1 year
:	
Msds :	<a href="#">MSDS_Antibody.pdf</a>
Other_name :	PLCB3; 1-phosphatidylinositol 4; 5-bisphosphate phosphodiesterase beta-3; Phosphoinositide phospholipase C-beta-3; Phospholipase C-beta-3; PLC-beta-3

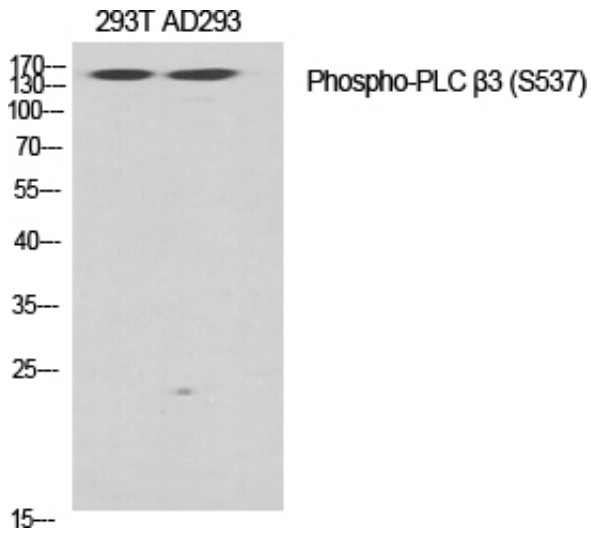


Molecular  
Weight :

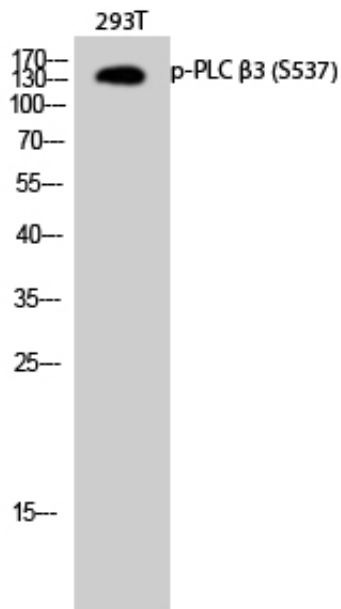
150KD

---

## Product Images



Western Blot analysis of various cells using Phospho-PLC  $\beta$ 3 (S537) Polyclonal Antibody diluted at 1 : 500



Western Blot analysis of 293T cells using Phospho-PLC  $\beta$ 3 (S537) Polyclonal Antibody diluted at 1 : 500