

PKD1 (phospho Ser205) Polyclonal Antibody

Catalog_no :	AP0720
Applications :	WB,IHC-p,ELISA
Reactivity :	Human,Mouse,Rat
Category :	抗原抗体
Size :	100µg/50µg/20µg
Gene_name :	PRKD1
Protein_name :	Serine/threonine-protein kinase D1
Humangene_id :	5587
Humanswissprot_no :	Q15139
Mousegene_id :	18760
Mouseswissprot_no :	Q62101
Ratgene_id :	85421
Ratswissprot_no :	Q9WTQ1
Immunogen :	The antiserum was produced against synthesized peptide derived from human PKD1/PKC mu around the phosphorylation site of Ser205. AA range:171-220
Specificity :	Phospho-PKD1 (S205) Polyclonal Antibody detects endogenous levels of PKD1 protein only when phosphorylated at S205.
Formulation :	Liquid in PBS containing 50% glycerol, 0.5% BSA and 0.02% sodium azide.
Source :	Rabbit
Dilution :	Western Blot: 1/500 - 1/2000. Immunohistochemistry: 1/100 - 1/300. ELISA: 1/40000. Not yet tested in other applications.
Purification :	The antibody was affinity-purified from rabbit antiserum by affinity-chromatography using epitope-specific immunogen.
Concentration :	1 mg/ml
Storage_stability :	-20°C/1 year

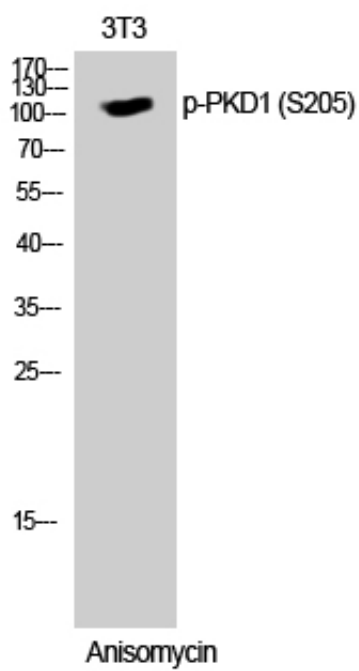


MsdS : [MSDS_Antibody.pdf](#)

Other_name : PRKD1; PKD; PKD1; PRKCM; Serine/threonine-protein kinase D1; Protein kinase C mu type; Protein kinase D; nPKC-D1; nPKC-mu

Molecular Weight : 110KD

Product Images



Western Blot analysis of 3T3 cells using Phospho-PKD1 (S205) Polyclonal Antibody