

Caspase-3 (phospho Ser150) Polyclonal Antibody

Catalog_no :	AP0727
Applications :	WB,IHC-p,ELISA
Reactivity :	Human,Mouse,Rat
Category :	抗原抗体
Size :	100µg/50µg/20µg
Gene_name :	CASP3
Protein_name :	Caspase-3
Humangene_id :	836
Humanswissprot_no :	P42574
Mousegene_id :	12367
Mouseswissprot_no :	P70677
Ratgene_id :	25402
Ratswissprot_no :	P55213
Immunogen :	The antiserum was produced against synthesized peptide derived from human Caspase 3 around the phosphorylation site of Ser150. AA range:116-165
Specificity :	Phospho-Caspase-3 (S150) Polyclonal Antibody detects endogenous levels of Caspase-3 protein only when phosphorylated at S150.
Formulation :	Liquid in PBS containing 50% glycerol, 0.5% BSA and 0.02% sodium azide.
Source :	Rabbit
Dilution :	Western Blot: 1/500 - 1/2000. Immunohistochemistry: 1/100 - 1/300. ELISA: 1/40000. Not yet tested in other applications.
Purification :	The antibody was affinity-purified from rabbit antiserum by affinity-chromatography using epitope-specific immunogen.
Concentration :	1 mg/ml
Storage_stability :	-20°C/1 year

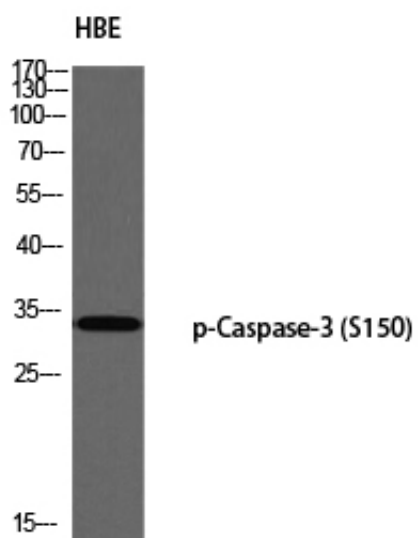


MsdS : MSDS_Antibody.pdf

Other_name : CASP3; CPP32; Caspase-3; CASP-3; Apopain; Cysteine protease CPP32; CPP-32; Protein Yama; SREBP cleavage activity 1; SCA-1

Molecular Weight : 34KD

Product Images



Western blot analysis of HBE using p-Caspase-3 (S150) antibody. Antibody was diluted at 1:1000