

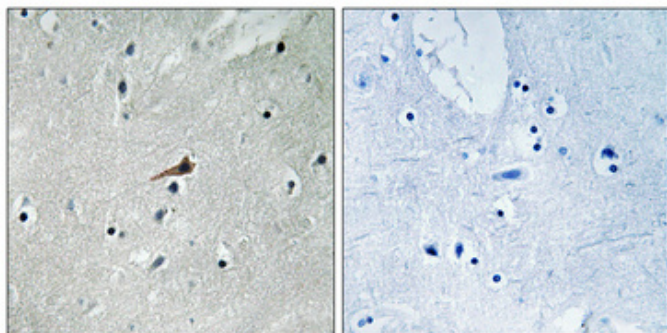
PDGFR- β (phospho Tyr740) Polyclonal Antibody

Catalog_no :	AP0742
Applications :	WB,IHC-p,ELISA
Reactivity :	Human,Mouse,Rat
Category :	抗原抗体
Size :	100 μ g/50 μ g/20 μ g
Gene_name :	PDGFRB
Protein_name :	Platelet-derived growth factor receptor beta
Humangene_id :	5159
Humanswissprot_no :	P09619
Mousegene_id :	18596
Mouseswissprot_no :	P05622
Ratgene_id :	24629
Ratswissprot_no :	Q05030
Immunogen :	The antiserum was produced against synthesized peptide derived from human PDGFR beta around the phosphorylation site of Tyr740. AA range:711-760
Specificity :	Phospho-PDGFR- β (Y740) Polyclonal Antibody detects endogenous levels of PDGFR- β protein only when phosphorylated at Y740.
Formulation :	Liquid in PBS containing 50% glycerol, 0.5% BSA and 0.02% sodium azide.
Source :	Rabbit
Dilution :	Western Blot: 1/500 - 1/2000. Immunohistochemistry: 1/100 - 1/300. ELISA: 1/5000. Not yet tested in other applications.
Purification :	The antibody was affinity-purified from rabbit antiserum by affinity-chromatography using epitope-specific immunogen.
Concentration :	1 mg/ml
Storage_stability :	-20°C/1 year



MsdS :	MSDS_Antibody.pdf
Other_name :	PDGFRB; PDGFR; PDGFR1; Platelet-derived growth factor receptor beta; PDGF-R-beta; PDGFR-beta; Beta platelet-derived growth factor receptor; Beta-type platelet-derived growth factor receptor; CD140 antigen-like family member B; Platelet-deri
Molecular Weight :	170KD

Product Images



Immunohistochemical analysis of paraffin-embedded Human brain. Antibody was diluted at 1:100(4°,overnight). High-pressure and temperature Tris-EDTA,pH8.0 was used for antigen retrieval. Negative contrl (right) obtaned from antibody was pre-absorbed by immunogen peptide.