

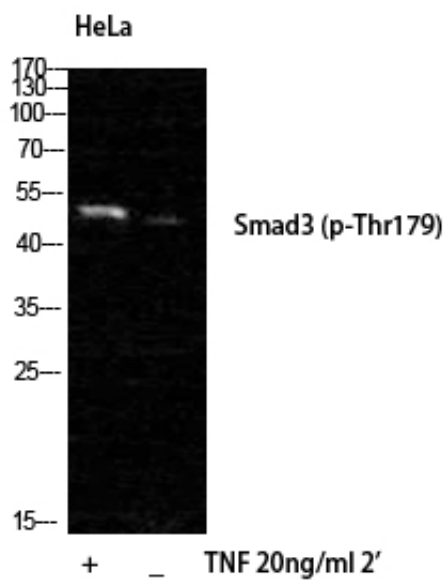
Smad3 (phospho Thr179) Polyclonal Antibody

Catalog_no :	AP0745
Applications :	WB,IHC-p,ELISA
Reactivity :	Human,Mouse,Rat
Category :	抗原抗体
Size :	100µg/50µg/20µg
Gene_name :	SMAD3
Protein_name :	Mothers against decapentaplegic homolog 3
Humangene_id :	4088
Humanswissprot_no :	P84022
Mousegene_id :	17127
Mouseswissprot_no :	Q8BUN5
Ratgene_id :	25631
Ratswissprot_no :	P84025
Immunogen :	The antiserum was produced against synthesized peptide derived from human Smad3 around the phosphorylation site of Thr179. AA range:145-194
Specificity :	Phospho-Smad3 (T179) Polyclonal Antibody detects endogenous levels of Smad3 protein only when phosphorylated at T179.
Formulation :	Liquid in PBS containing 50% glycerol, 0.5% BSA and 0.02% sodium azide.
Source :	Rabbit
Dilution :	Western Blot: 1/500 - 1/2000. Immunohistochemistry: 1/100 - 1/300. ELISA: 1/10000. Not yet tested in other applications.
Purification :	The antibody was affinity-purified from rabbit antiserum by affinity-chromatography using epitope-specific immunogen.
Concentration :	1 mg/ml
Storage_stability :	-20°C/1 year



MsdS :	MSDS_Antibody.pdf
Other_name :	SMAD3; MADH3; Mothers against decapentaplegic homolog 3; MAD homolog 3; Mad3; Mothers against DPP homolog 3; hMAD-3; JV15-2; SMAD family member 3; SMAD 3; Smad3; hSMAD3
Molecular Weight :	50KD

Product Images



Western Blot analysis of HELA cells using Phospho-Smad3 (T179) Polyclonal Antibody