

TPH1 (phospho Ser58) Polyclonal Antibody

Catalog_no :	AP0747
Applications :	WB,IHC-p,ELISA
Reactivity :	Human,Mouse,Rat
Category :	抗原抗体
Size :	100µg/50µg/20µg
Gene_name :	TPH1
Protein_name :	Tryptophan 5-hydroxylase 1
Humangene_id :	7166
Humanswissprot_no :	P17752
Mousegene_id :	21990
Mouseswissprot_no :	P17532
Ratgene_id :	24848
Ratswissprot_no :	P09810
Immunogen :	The antiserum was produced against synthesized peptide derived from human Tryptophan Hydroxylase around the phosphorylation site of Ser58. AA range:26-75
Specificity :	Phospho-TPH1 (S58) Polyclonal Antibody detects endogenous levels of TPH1 protein only when phosphorylated at S58.
Formulation :	Liquid in PBS containing 50% glycerol, 0.5% BSA and 0.02% sodium azide.
Source :	Rabbit
Dilution :	Western Blot: 1/500 - 1/2000. Immunohistochemistry: 1/100 - 1/300. ELISA: 1/10000. Not yet tested in other applications.
Purification :	The antibody was affinity-purified from rabbit antiserum by affinity-chromatography using epitope-specific immunogen.
Concentration :	1 mg/ml
Storage_stability :	-20°C/1 year

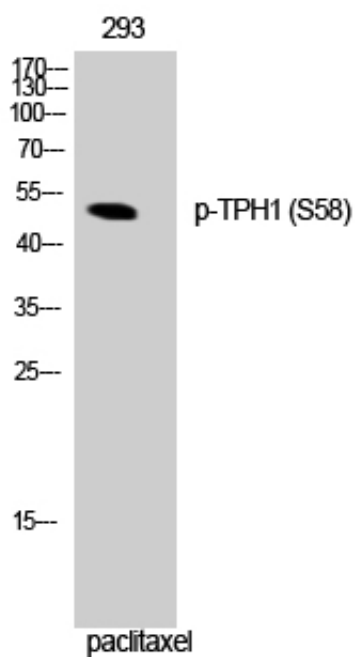


Msd : MSDS_Antibody.pdf

Other_name : TPH1; TPH; TPRH; TRPH; Tryptophan 5-hydroxylase 1; Tryptophan 5-monoxygenase 1

Molecular Weight : 51KD

Product Images



Western Blot analysis of 293 cells using Phospho-TPH1 (S58) Polyclonal Antibody