

## Caspase-1 (phospho Ser376) Polyclonal Antibody

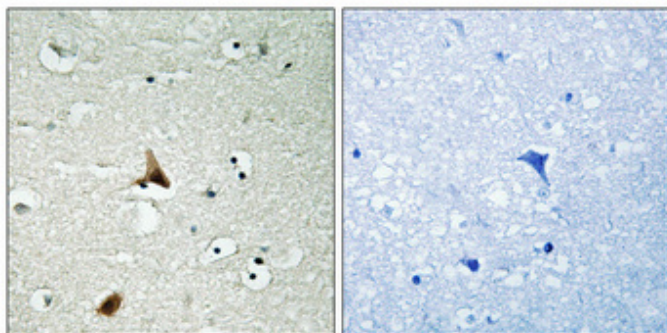
Catalog_no :	AP0749
Applications :	WB,IHC-p,ELISA
Reactivity :	Human,Mouse,Rat
Category :	抗原抗体
Size :	100µg/50µg/20µg
Gene_name :	CASP1
Protein_name :	Caspase-1
Humangene_id	<a href="#">834</a>
:	
Humanswissprot	<a href="#">P29466</a>
_no :	
Mousegene_id :	<a href="#">12362</a>
Mouseswissprot	<a href="#">P29452</a>
_no :	
Ratswissprot_no	<a href="#">P43527</a>
:	
Immunogen :	The antiserum was produced against synthesized peptide derived from human Caspase 1 around the phosphorylation site of Ser376. AA range:342-391
Specificity :	Phospho-Caspase-1 (S376) Polyclonal Antibody detects endogenous levels of Caspase-1 protein only when phosphorylated at S376.
Formulation :	Liquid in PBS containing 50% glycerol, 0.5% BSA and 0.02% sodium azide.
Source :	Rabbit
Dilution :	Western Blot: 1/500 - 1/2000. Immunohistochemistry: 1/100 - 1/300. ELISA: 1/20000. Not yet tested in other applications.
Purification :	The antibody was affinity-purified from rabbit antiserum by affinity-chromatography using epitope-specific immunogen.
Concentration :	1 mg/ml
Storage_stability	-20°C/1 year
:	
Msds :	<a href="#">MSDS_Antibody.pdf</a>



Other\_name : CASP1; IL1BC; IL1BCE; Caspase-1; CASP-1; Interleukin-1 beta convertase; IL-1BC;  
Interleukin-1 beta-converting enzyme; ICE; IL-1 beta-converting enzyme; p45

Molecular Weight : 29KD

## Product Images



Immunohistochemical analysis of paraffin-embedded Human brain. Antibody was diluted at 1:100(4°,overnight). High-pressure and temperature Tris-EDTA,pH8.0 was used for antigen retrieval. Negative contrl (right) obtaned from antibody was pre-absorbed by immunogen peptide.