

hnRNP C1/2 (phospho Ser260) Polyclonal Antibody

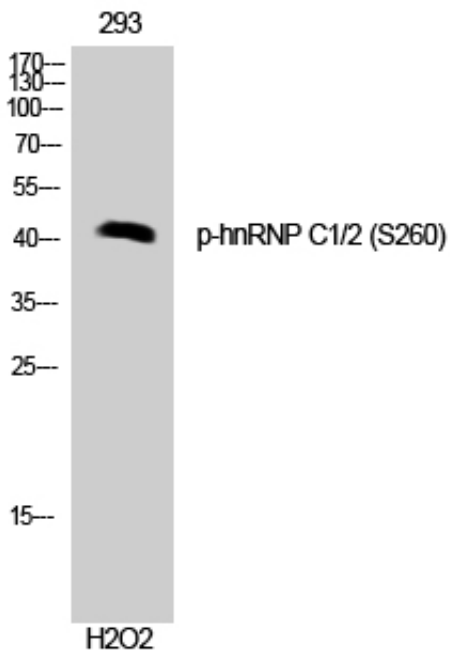
Catalog_no :	AP0750
Applications :	WB,IHC-p,ELISA
Reactivity :	Human,Mouse,Rat
Category :	抗原抗体
Size :	100µg/50µg/20µg
Gene_name :	HNRNPC
Protein_name :	Heterogeneous nuclear ribonucleoproteins C1/C2
Humangene_id :	3183
Humanswissprot_no :	P07910
Mousegene_id :	15381
Mouseswissprot_no :	Q9Z204
Ratswissprot_no :	P17132
Immunogen :	The antiserum was produced against synthesized peptide derived from human hnRNP C1/2 around the phosphorylation site of Ser260. AA range:231-280
Specificity :	Phospho-hnRNP C1/2 (S260) Polyclonal Antibody detects endogenous levels of hnRNP C1/2 protein only when phosphorylated at S260.
Formulation :	Liquid in PBS containing 50% glycerol, 0.5% BSA and 0.02% sodium azide.
Source :	Rabbit
Dilution :	Western Blot: 1/500 - 1/2000. Immunohistochemistry: 1/100 - 1/300. ELISA: 1/20000. Not yet tested in other applications.
Purification :	The antibody was affinity-purified from rabbit antiserum by affinity-chromatography using epitope-specific immunogen.
Concentration :	1 mg/ml
Storage_stability :	-20°C/1 year
Msds :	MSDS_Antibody.pdf



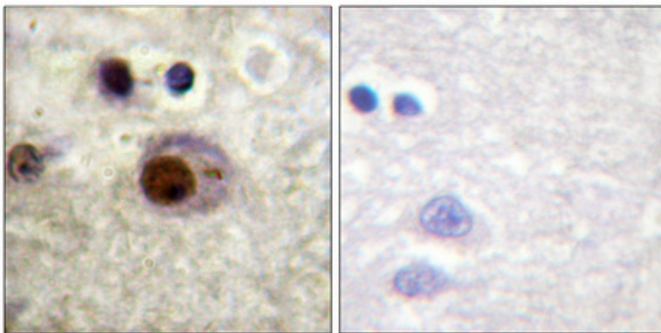
Other_name : HNRNPC; HNRPC; Heterogeneous nuclear ribonucleoproteins C1/C2; hnRNP C1/C2

Molecular Weight : 41KD

Product Images



Western Blot analysis of 293 cells using Phospho-hnRNP C1/2 (S260) Polyclonal Antibody cells nucleus extracted by Minute TM Cytoplasmic and Nuclear Fractionation kit (SC-003, Invent biotech, MN, USA).



Immunohistochemical analysis of paraffin-embedded Human brain. Antibody was diluted at 1:100 (4°, overnight). High-pressure and temperature Tris-EDTA, pH 8.0 was used for antigen retrieval. Negative control (right) obtained from antibody was pre-absorbed by immunogen peptide.