

## Cdc37 (phospho Ser13) Polyclonal Antibody

Catalog_no :	AP0751
Applications :	WB,IHC-p,ELISA
Reactivity :	Human,Mouse,Rat
Category :	抗原抗体
Size :	100µg/50µg/20µg
Gene_name :	CDC37
Protein_name :	Hsp90 co-chaperone Cdc37
Humangene_id :	<a href="#">11140</a>
Humanswissprot_no :	<a href="#">Q16543</a>
Mousegene_id :	<a href="#">12539</a>
Mouseswissprot_no :	<a href="#">Q61081</a>
Ratgene_id :	<a href="#">114562</a>
Ratswissprot_no :	<a href="#">Q63692</a>
Immunogen :	The antiserum was produced against synthesized peptide derived from human CDC37 around the phosphorylation site of Ser13. AA range:1-50
Specificity :	Phospho-Cdc37 (S13) Polyclonal Antibody detects endogenous levels of Cdc37 protein only when phosphorylated at S13.
Formulation :	Liquid in PBS containing 50% glycerol, 0.5% BSA and 0.02% sodium azide.
Source :	Rabbit
Dilution :	Western Blot: 1/500 - 1/2000. Immunohistochemistry: 1/100 - 1/300. ELISA: 1/20000. Not yet tested in other applications.
Purification :	The antibody was affinity-purified from rabbit antiserum by affinity-chromatography using epitope-specific immunogen.
Concentration :	1 mg/ml
Storage_stability :	-20°C/1 year

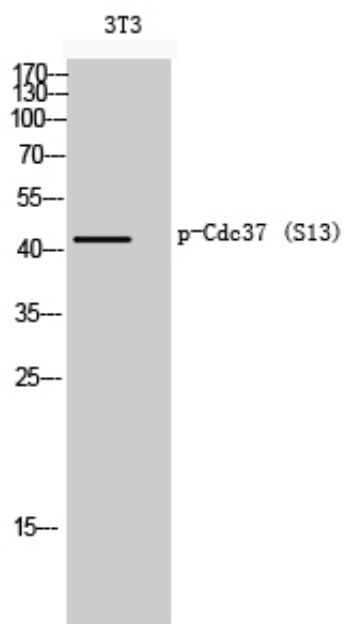


MsdS : MSDS\_Antibody.pdf

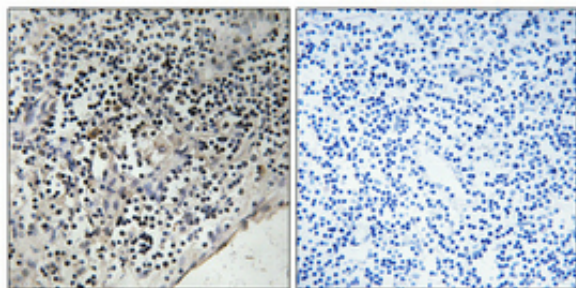
Other\_name : CDC37; CDC37A; Hsp90 co-chaperone Cdc37; Hsp90 chaperone protein kinase-targeting subunit; p50Cdc37

Molecular Weight : 44KD

## Product Images



Western Blot analysis of 3T3 cells using Phospho-Cdc37 (S13) Polyclonal Antibody



Immunohistochemical analysis of paraffin-embedded Human lung cancer. Antibody was diluted at 1:100(4°, overnight). High-pressure and temperature Tris-EDTA, pH8.0 was used for antigen retrieval. Negative control (right) obtained from antibody was pre-absorbed by immunogen peptide.