

## IRP-1 (phospho Ser711) Polyclonal Antibody

|                   |   |
|-------------------|---|
| Catalog_no :      | AP0754  |
| Applications :    | WB,IHC-p,ELISA  |
| Reactivity :      | Human,Mouse,Rat,Monkey  |
| Category :        | 抗原抗体  |
| Size :            | 100µg/50µg/20µg   |
| Gene_name :       | ACO1  |
| Protein_name :    | Cytoplasmic aconitate hydratase   |
| Humangene_id      | <a href="#">48</a>  |
| :                 |   |
| Humanswissprot    | <a href="#">P21399</a>  |
| _no :             |   |
| Mousegene_id :    | <a href="#">11428</a>   |
| Mouseswissprot    | <a href="#">P28271</a>  |
| _no :             |   |
| Ratgene_id :      | <a href="#">50655</a>   |
| Ratswissprot_no   | <a href="#">Q63270</a>  |
| :                 |   |
| Immunogen :       | The antiserum was produced against synthesized peptide derived from human IREB1 around the phosphorylation site of Ser711. AA range:681-730 |
| Specificity :     | Phospho-IRP-1 (S711) Polyclonal Antibody detects endogenous levels of IRP-1 protein only when phosphorylated at S711.                       |
| Formulation :     | Liquid in PBS containing 50% glycerol, 0.5% BSA and 0.02% sodium azide.   |
| Source :          | Rabbit  |
| Dilution :        | Western Blot: 1/500 - 1/2000. Immunohistochemistry: 1/100 - 1/300. ELISA: 1/10000. Not yet tested in other applications.                    |
| Purification :    | The antibody was affinity-purified from rabbit antiserum by affinity-chromatography using epitope-specific immunogen.                       |
| Concentration :   | 1 mg/ml   |
| Storage_stability | -20°C/1 year  |
| :                 |   |

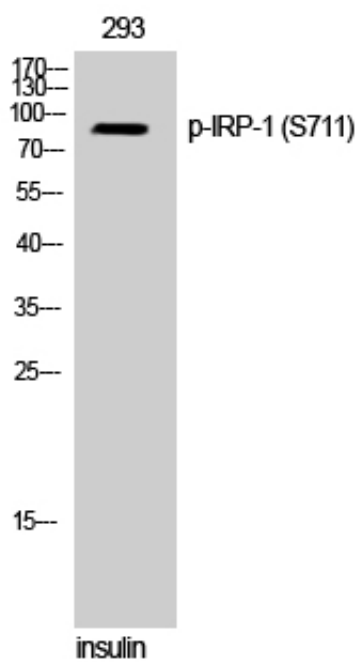


MsdS : [MSDS\\_Antibody.pdf](#)

Other\_name : ACO1; IREB1; Cytoplasmic aconitate hydratase; Aconitase; Citrate hydro-lyase; Ferritin repressor protein; Iron regulatory protein 1; IRP1; Iron-responsive element-binding protein 1; IRE-BP 1

Molecular Weight : 85KD

## Product Images



Western Blot analysis of 293 cells using Phospho-IRP-1 (S711) Polyclonal Antibody