

Integrin β 4 (phospho Tyr1510) Polyclonal Antibody

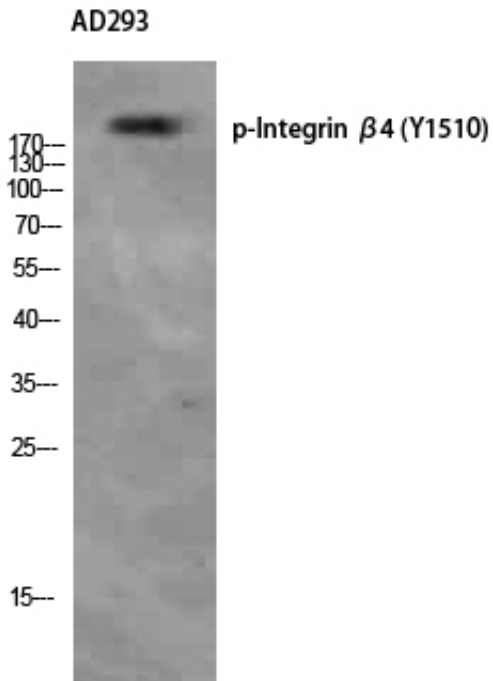
Catalog_no :	AP0755
Applications :	WB,IHC-p,ELISA
Reactivity :	Human,Mouse,Rat
Category :	抗原抗体
Size :	100 μ g/50 μ g/20 μ g
Gene_name :	ITGB4
Protein_name :	Integrin beta-4
Humangene_id	3691
:	
Humanswissprot	P16144
_no :	
Mouseswissprot	A2A863
_no :	
Ratgene_id :	25724
Ratswissprot_no	Q64632
:	
Immunogen :	The antiserum was produced against synthesized peptide derived from human ITGB4 around the phosphorylation site of Tyr1510. AA range:1481-1530
Specificity :	Phospho-Integrin β 4 (Y1510) Polyclonal Antibody detects endogenous levels of Integrin β 4 protein only when phosphorylated at Y1510.
Formulation :	Liquid in PBS containing 50% glycerol, 0.5% BSA and 0.02% sodium azide.
Source :	Rabbit
Dilution :	Western Blot: 1/500 - 1/2000. Immunohistochemistry: 1/100 - 1/300. ELISA: 1/10000. Not yet tested in other applications.
Purification :	The antibody was affinity-purified from rabbit antiserum by affinity-chromatography using epitope-specific immunogen.
Concentration :	1 mg/ml
Storage_stability	-20°C/1 year
:	
Msds :	MSDS_Antibody.pdf



Other_name : ITGB4; Integrin beta-4; GP150; CD antigen CD104

Molecular Weight : 202KD

Product Images



Western Blot analysis of AD293 using Phospho-Integrin β 4 (Y1510) Polyclonal Antibody. Antibody was diluted at 1:500