

## Per2 (phospho Ser662) Polyclonal Antibody

Catalog_no :	AP0764
Applications :	WB,IHC-p,ELISA
Reactivity :	Human,Mouse
Category :	抗原抗体
Size :	100µg/50µg/20µg
Gene_name :	PER2
Protein_name :	Period circadian protein homolog 2
Humangene_id :	<a href="#">8864</a>
Humanswissprot_no :	<a href="#">O15055</a>
Mousegene_id :	<a href="#">18627</a>
Mouseswissprot_no :	<a href="#">O54943</a>
Immunogen :	The antiserum was produced against synthesized peptide derived from human Period Circadian Protein 2 around the phosphorylation site of Ser662. AA range:636-685
Specificity :	Phospho-Per2 (S662) Polyclonal Antibody detects endogenous levels of Per2 protein only when phosphorylated at S662.
Formulation :	Liquid in PBS containing 50% glycerol, 0.5% BSA and 0.02% sodium azide.
Source :	Rabbit
Dilution :	Western Blot: 1/500 - 1/2000. Immunohistochemistry: 1/100 - 1/300. ELISA: 1/5000. Not yet tested in other applications.
Purification :	The antibody was affinity-purified from rabbit antiserum by affinity-chromatography using epitope-specific immunogen.
Concentration :	1 mg/ml
Storage_stability :	-20°C/1 year
Msds :	<a href="#">MSDS_Antibody.pdf</a>
Other_name :	PER2; KIAA0347; Period circadian protein homolog 2; hPER2; Circadian clock protein PERIOD 2

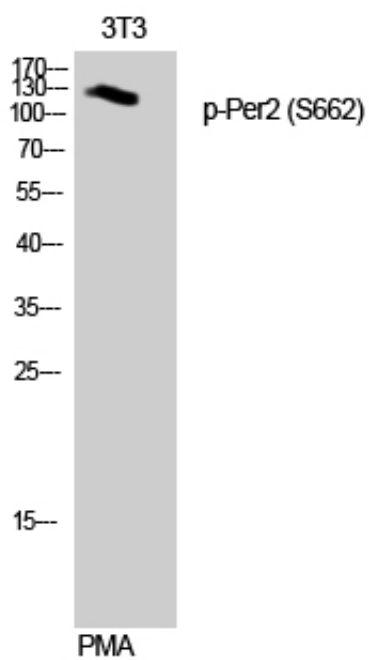


Molecular  
Weight :

120KD

---

## Product Images



Western Blot analysis of 3T3 cells using Phospho-Per2 (S662) Polyclonal Antibody diluted at 1 : 500