

NF2 (phospho Ser10) Polyclonal Antibody

Catalog_no :	AP0772
Applications :	WB,IHC-p,ELISA
Reactivity :	Human,Mouse,Rat
Category :	抗原抗体
Size :	100µg/50µg/20µg
Gene_name :	NF2
Protein_name :	Merlin
Humangene_id :	4771
Humanswissprot_no :	P35240
Mousegene_id :	18016
Mouseswissprot_no :	P46662
Ratgene_id :	25744
Ratswissprot_no :	Q63648
Immunogen :	The antiserum was produced against synthesized peptide derived from human Merlin around the phosphorylation site of Ser10. AA range:1-50
Specificity :	Phospho-NF2 (S10) Polyclonal Antibody detects endogenous levels of NF2 protein only when phosphorylated at S10.
Formulation :	Liquid in PBS containing 50% glycerol, 0.5% BSA and 0.02% sodium azide.
Source :	Rabbit
Dilution :	Western Blot: 1/500 - 1/2000. Immunohistochemistry: 1/100 - 1/300. ELISA: 1/5000. Not yet tested in other applications.
Purification :	The antibody was affinity-purified from rabbit antiserum by affinity-chromatography using epitope-specific immunogen.
Concentration :	1 mg/ml
Storage_stability :	-20°C/1 year

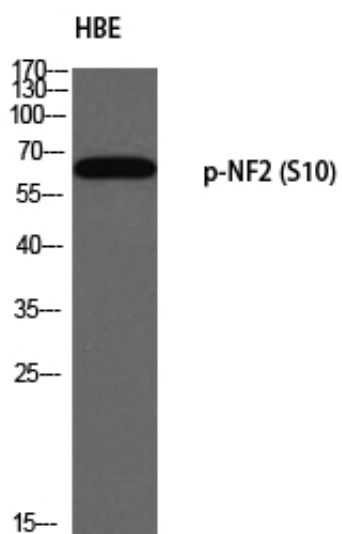


Msd : [MSDS_Antibody.pdf](#)

Other_name : NF2; SCH; Merlin; Moesin-ezrin-radixin-like protein; Neurofibromin-2; Schwannomerlin; Schwannomin

Molecular Weight : 65KD

Product Images



Western blot analysis of HBE using p-NF2 (S10) antibody.
Antibody was diluted at 1:500