

## Akt1/3 (phospho Tyr437/434) Polyclonal Antibody

Catalog_no :	<u>AP0778</u>
Applications :	<u>WB,IHC-p,ELISA</u>
Reactivity :	<u>Human,Mouse,Rat</u>
Category :	<u>抗原抗体</u>
Size :	<u>100µg/50µg/20µg</u>
Gene_name :	<u>AKT1/AKT3</u>
Protein_name :	<u>RAC-alpha serine/threonine-protein kinase</u>
Humangene_id :	<u><a href="#">207/10000</a></u>
Humanswissprot_no :	<u><a href="#">P31749/Q9Y243</a></u>
Mousegene_id :	<u><a href="#">11651/23797</a></u>
Ratgene_id :	<u><a href="#">24185/29414</a></u>
Ratswissprot_no :	<u><a href="#">P47196/Q63484</a></u>
Immunogen :	<u>The antiserum was produced against synthesized peptide derived from human AKT1/3 around the phosphorylation site of Tyr437/434. AA range:406-455</u>
Specificity :	<u>Phospho-Akt1/3 (Y437/434) Polyclonal Antibody detects endogenous levels of Akt1/3 protein only when phosphorylated at Y437/434.</u>
Formulation :	<u>Liquid in PBS containing 50% glycerol, 0.5% BSA and 0.02% sodium azide.</u>
Source :	<u>Rabbit</u>
Dilution :	<u>Western Blot: 1/500 - 1/2000. Immunohistochemistry: 1/100 - 1/300. ELISA: 1/20000. Not yet tested in other applications.</u>
Purification :	<u>The antibody was affinity-purified from rabbit antiserum by affinity-chromatography using epitope-specific immunogen.</u>
Concentration :	<u>1 mg/ml</u>
Storage_stability :	<u>-20°C/1 year</u>
Msds :	<u>MSDS_Antibody.pdf</u>
Other_name :	<u>AKT1; PKB; RAC; RAC-alpha serine/threonine-protein kinase; Protein kinase B; PKB;</u>



Protein kinase B alpha; PKB alpha; Proto-oncogene c-Akt; RAC-PK-alpha; AKT3; PKBG;  
RAC-gamma serine/threonine-protein kinase; Protein kinase Akt-3; Protein ki

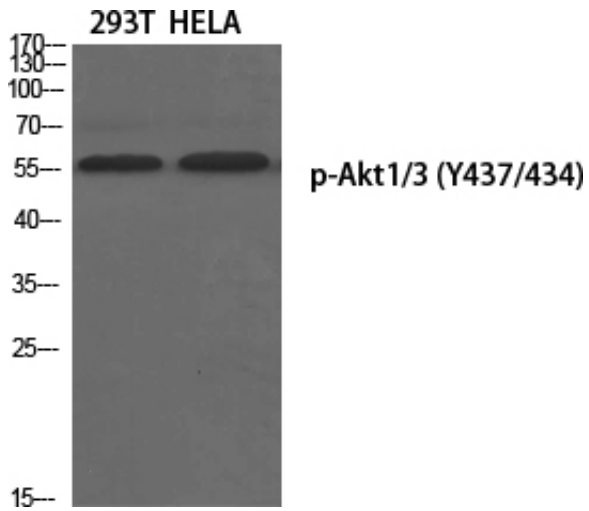
---

Molecular  
Weight :

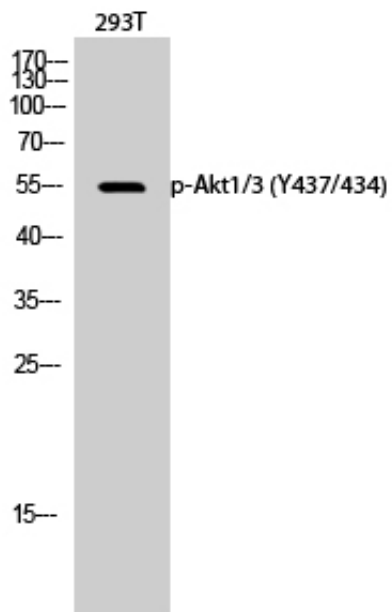
56KD

---

## Product Images



Western Blot analysis of various cells using Phospho-Akt1/3 (Y437/434) Polyclonal Antibody diluted at 1 : 1000



Western Blot analysis of 293T cells using Phospho-Akt1/3 (Y437/434) Polyclonal Antibody diluted at 1 : 1000

The picture was kindly provided by our customer, antibody was diluted at 1:500

