

Casein Kinase I $\alpha$  (phospho Tyr294) Polyclonal Antibody

Catalog_no :	AP0782
Applications :	WB,IHC-p,ELISA
Reactivity :	Human,Mouse,Rat
Category :	抗原抗体
Size :	100 $\mu$ g/50 $\mu$ g/20 $\mu$ g
Gene_name :	CSNK1A1
Protein_name :	Casein kinase I isoform alpha
Humangene_id :	<a href="#">1452/122011</a>
Humanswissprot_no :	<a href="#">P48729/Q8N752</a>
Ratgene_id :	<a href="#">113927</a>
Ratswissprot_no :	<a href="#">P97633</a>
Immunogen :	The antiserum was produced against synthesized peptide derived from human CK-1 alpha around the phosphorylation site of Tyr294. AA range:260-309
Specificity :	Phospho-Casein Kinase I $\alpha$ (Y294) Polyclonal Antibody detects endogenous levels of Casein Kinase I $\alpha$ protein only when phosphorylated at Y294.
Formulation :	Liquid in PBS containing 50% glycerol, 0.5% BSA and 0.02% sodium azide.
Source :	Rabbit
Dilution :	Western Blot: 1/500 - 1/2000. Immunohistochemistry: 1/100 - 1/300. ELISA: 1/10000. Not yet tested in other applications.
Purification :	The antibody was affinity-purified from rabbit antiserum by affinity-chromatography using epitope-specific immunogen.
Concentration :	1 mg/ml
Storage_stability :	-20°C/1 year
Msds :	<a href="#">MSDS_Antibody.pdf</a>
Other_name :	CSNK1A1; Casein kinase I isoform alpha; CKI-alpha; CK1; CSNK1A1L; Casein kinase I isoform alpha-like; CKI-alpha-like; CK1

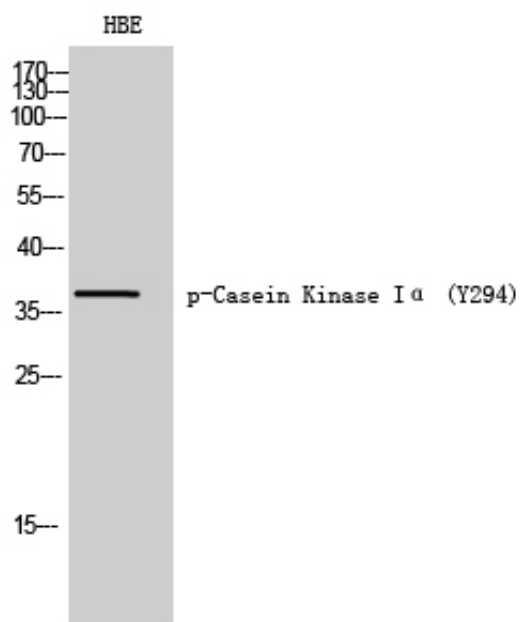


Molecular  
Weight :

37KD

---

## Product Images



Western Blot analysis of HBE cells using Phospho-Casein Kinase I $\alpha$  (Y294) Polyclonal Antibody diluted at 1 : 1000