

MSK2 (phospho Thr568) Polyclonal Antibody

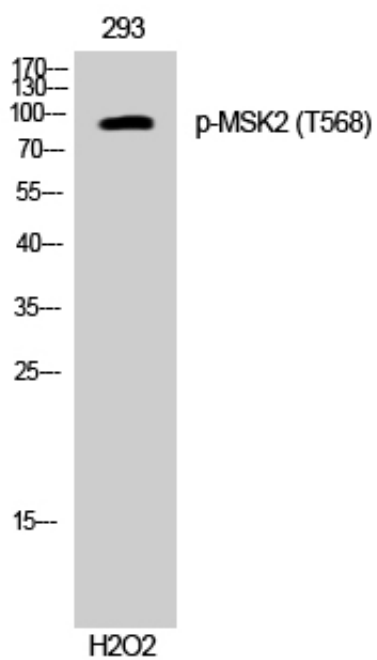
Catalog_no :	AP0792
Applications :	WB,IHC-p,ELISA
Reactivity :	Human,Mouse
Category :	抗原抗体
Size :	100µg/50µg/20µg
Gene_name :	RPS6KA4
Protein_name :	Ribosomal protein S6 kinase alpha-4
Humangene_id :	8986
Humanswissprot_no :	O75676
Mousegene_id :	56613
Mouseswissprot_no :	Q9Z2B9
Immunogen :	The antiserum was produced against synthesized peptide derived from human MSK2 around the phosphorylation site of Thr568. AA range:531-580
Specificity :	Phospho-MSK2 (T568) Polyclonal Antibody detects endogenous levels of MSK2 protein only when phosphorylated at T568.
Formulation :	Liquid in PBS containing 50% glycerol, 0.5% BSA and 0.02% sodium azide.
Source :	Rabbit
Dilution :	Western Blot: 1/500 - 1/2000. Immunohistochemistry: 1/100 - 1/300. ELISA: 1/40000. Not yet tested in other applications.
Purification :	The antibody was affinity-purified from rabbit antiserum by affinity-chromatography using epitope-specific immunogen.
Concentration :	1 mg/ml
Storage_stability :	-20°C/1 year
Msds :	MSDS_Antibody.pdf
Other_name :	RPS6KA4; MSK2; Ribosomal protein S6 kinase alpha-4; S6K-alpha-4; 90 kDa ribosomal protein S6 kinase 4; Nuclear mitogen- and stress-activated protein kinase 2; Ribosomal protein kinase B; RSKB



Molecular
Weight :

95KD

Product Images



Western Blot analysis of 293 cells using Phospho-MSK2 (T568) Polyclonal Antibody cells nucleus extracted by Minute TM Cytoplasmic and Nuclear Fractionation kit (SC-003, Inventbiotech, MN, USA).