

## Ephrin-B1/2/3 (phospho Tyr324) Polyclonal Antibody

Catalog_no :	AP0812
Applications :	WB,IHC-p,ELISA
Reactivity :	Human,Mouse,Rat
Category :	抗原抗体
Size :	100µg/50µg/20µg
Gene_name :	EFNB1/EFNB2/EFNB3
Protein_name :	Ephrin-B1/2/3
Humangene_id :	<a href="#">1947/1948/1949</a>
Humanswissprot_no :	<a href="#">P98172/P52799/Q15768</a>
Mousegene_id :	<a href="#">13641/13642/13643</a>
Ratswissprot_no :	<a href="#">P52796</a>
Immunogen :	The antiserum was produced against synthesized peptide derived from human Ephrin B1/B2/B3 around the phosphorylation site of Tyr324. AA range:290-339
Specificity :	Phospho-Ephrin-B1/2/3 (Y324) Polyclonal Antibody detects endogenous levels of Ephrin-B1/2/3 protein only when phosphorylated at Y324.
Formulation :	Liquid in PBS containing 50% glycerol, 0.5% BSA and 0.02% sodium azide.
Source :	Rabbit
Dilution :	Western Blot: 1/500 - 1/2000. Immunohistochemistry: 1/100 - 1/300. ELISA: 1/20000. Not yet tested in other applications.
Purification :	The antibody was affinity-purified from rabbit antiserum by affinity-chromatography using epitope-specific immunogen.
Concentration :	1 mg/ml
Storage_stability :	-20°C/1 year
Msds :	MSDS_Antibody.pdf
Other_name :	EFNB1; EFL3; EPLG2; LERK2; Ephrin-B1; EFL-3; ELK ligand; ELK-L; EPH-related receptor tyrosine kinase ligand 2; LERK-2; EFNB2; EPLG5; HTKL; LERK5; Ephrin-B2; EPH-related receptor tyrosine kinase ligand 5; LERK-5; HTK ligand; HTK-L; EFNB3; EP

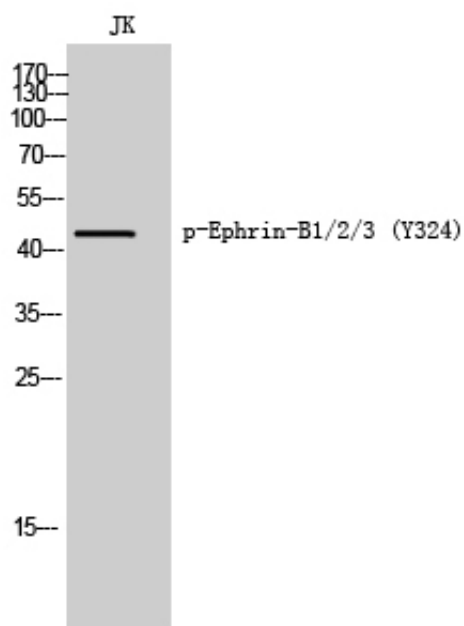


Molecular  
Weight :

46KD

---

## Product Images



Western Blot analysis of JK cells using Phospho-Ephrin-B1/2/3 (Y324) Polyclonal Antibody