

## Cortactin (phospho Tyr466) Polyclonal Antibody

Catalog_no :	AP0846
Applications :	WB,IHC-p,IF,ELISA
Reactivity :	Human,Mouse,Rat,Monkey
Category :	抗原抗体
Size :	100µg/50µg/20µg
Gene_name :	CTTN
Protein_name :	Src substrate cortactin
Humangene_id :	<a href="#">13043</a>
Humanswissprot_no :	<a href="#">Q14247</a>
Mousegene_id :	<a href="#">13043</a>
Mouseswissprot_no :	<a href="#">Q60598</a>
Immunogen :	The antiserum was produced against synthesized peptide derived from mouse Cortactin around the phosphorylation site of Tyr466. AA range:441-490
Specificity :	Phospho-Cortactin (Y466) Polyclonal Antibody detects endogenous levels of Cortactin protein only when phosphorylated at Y466.
Formulation :	Liquid in PBS containing 50% glycerol, 0.5% BSA and 0.02% sodium azide.
Source :	Rabbit
Dilution :	Western Blot: 1/500 - 1/2000. Immunohistochemistry: 1/100 - 1/300. Immunofluorescence: 1/200 - 1/1000. ELISA: 1/20000. Not yet tested in other applications.
Purification :	The antibody was affinity-purified from rabbit antiserum by affinity-chromatography using epitope-specific immunogen.
Concentration :	1 mg/ml
Storage_stability :	-20°C/1 year
Msds :	<a href="#">MSDS_Antibody.pdf</a>
Other_name :	CTTN; EMS1; Src substrate cortactin; Amplixin; Oncogene EMS1

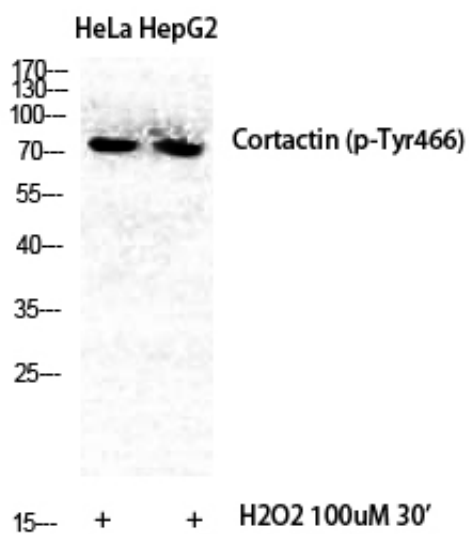


Molecular  
Weight :

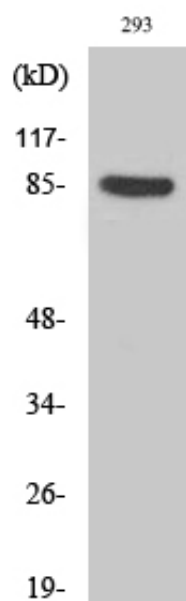
80KD

---

## Product Images



Western Blot analysis of various cells using Phospho-Cortactin (Y466) Polyclonal Antibody diluted at 1 : 500



Western Blot analysis of 293 cells using Phospho-Cortactin (Y466) Polyclonal Antibody diluted at 1 : 500