

NFκB-p65 (phospho Ser311) Polyclonal Antibody

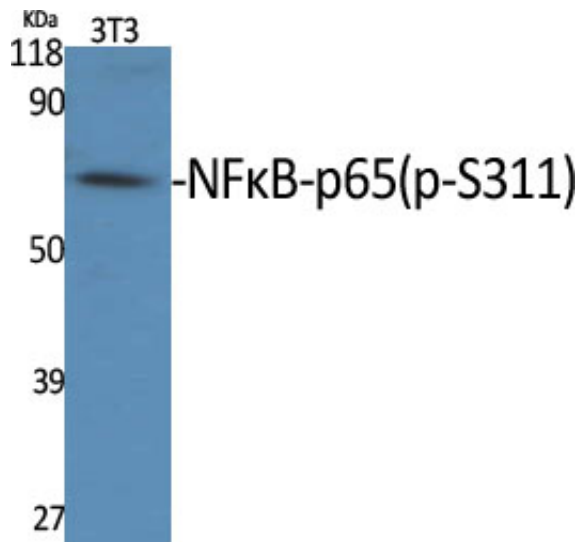
| | |
|---------------------|--|
| Catalog_no : | AP0847 |
| Applications : | WB,IHC-p,IF,ELISA |
| Reactivity : | Human,Mouse |
| Category : | 抗原抗体 |
| Size : | 100μg/50μg/20μg |
| Gene_name : | RELA |
| Protein_name : | Transcription factor p65 |
| Humangene_id : | 5970 |
| Humanswissprot_no : | Q04206 |
| Mousegene_id : | 19697 |
| Mouseswissprot_no : | Q04207 |
| Immunogen : | The antiserum was produced against synthesized peptide derived from human NF-kappaB p65 around the phosphorylation site of Ser311. AA range:278-327 |
| Specificity : | Phospho-NFκB-p65 (S311) Polyclonal Antibody detects endogenous levels of NFκB-p65 protein only when phosphorylated at S311. |
| Formulation : | Liquid in PBS containing 50% glycerol, 0.5% BSA and 0.02% sodium azide. |
| Source : | Rabbit |
| Dilution : | Western Blot: 1/500 - 1/2000. Immunohistochemistry: 1/100 - 1/300. Immunofluorescence: 1/200 - 1/1000. ELISA: 1/40000. Not yet tested in other applications. |
| Purification : | The antibody was affinity-purified from rabbit antiserum by affinity-chromatography using epitope-specific immunogen. |
| Concentration : | 1 mg/ml |
| Storage_stability : | -20°C/1 year |
| Msds : | MSDS_Antibody.pdf |
| Other_name : | RELA; NFKB3; Transcription factor p65; Nuclear factor NF-kappa-B p65 subunit; Nuclear factor of kappa light polypeptide gene enhancer in B-cells 3 |



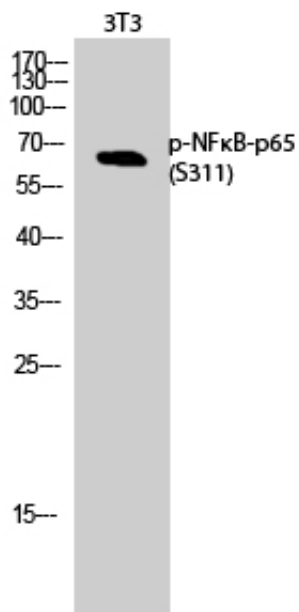
Molecular
Weight :

65KD

Product Images



Western Blot analysis of various cells using Phospho-NFκB-p65 (S311) Polyclonal Antibody



Western Blot analysis of 3T3 cells using Phospho-NFκB-p65 (S311) Polyclonal Antibody