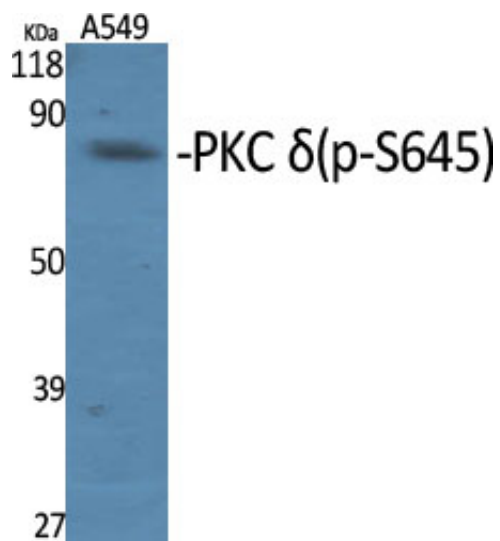


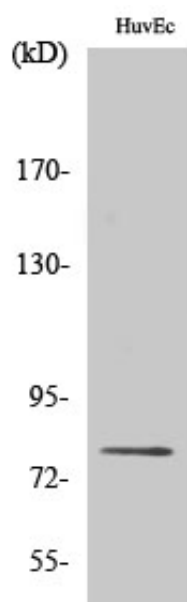
PKC δ (phospho Ser645) Polyclonal Antibody

Catalog_no :	AP0851
Applications :	WB,IHC-p,ELISA
Reactivity :	Human,Monkey
Category :	抗原抗体
Size :	100 μ g/50 μ g/20 μ g
Gene_name :	PRKCD
Protein_name :	Protein kinase C delta type
Humangene_id :	5580
Humanswissprot_no :	Q05655
Immunogen :	The antiserum was produced against synthesized peptide derived from human PKC delta around the phosphorylation site of Ser645. AA range:612-661
Specificity :	Phospho-PKC δ (S645) Polyclonal Antibody detects endogenous levels of PKC δ protein only when phosphorylated at S645.
Formulation :	Liquid in PBS containing 50% glycerol, 0.5% BSA and 0.02% sodium azide.
Source :	Rabbit
Dilution :	Western Blot: 1/500 - 1/2000. Immunohistochemistry: 1/100 - 1/300. ELISA: 1/10000. Not yet tested in other applications.
Purification :	The antibody was affinity-purified from rabbit antiserum by affinity-chromatography using epitope-specific immunogen.
Concentration :	1 mg/ml
Storage_stability :	-20°C/1 year
Msds :	MSDS_Antibody.pdf
Other_name :	PRKCD; Protein kinase C delta type; Tyrosine-protein kinase PRKCD; nPKC-delta
Molecular Weight :	77KD

Product Images



Western Blot analysis of various cells using Phospho-PKC δ (S645) Polyclonal Antibody diluted at 1 : 1000



Western Blot analysis of HuvEc cells using Phospho-PKC δ (S645) Polyclonal Antibody diluted at 1 : 1000